

ACCRINGTON & ROSSENDALE

COLLEGE

TECHNOLOGY & SKILLS CENTRE

**Find your
extraordinary.**

2022/23 | **PROSPECTUS**



Contents.

WELCOME	4	TAILORED SUPPORT	22
OUTSTANDING RESULTS	6	YOUR SIXTH FORM JOURNEY	28
EXTRAORDINARY DESTINATIONS	8	VOCATIONAL COURSES	30
TEACHING AND LEARNING	10	APPRENTICESHIPS	108
INDUSTRY FOCUS	12	STUDENT SERVICES	122
EXCEPTIONAL PARTNERSHIPS	14	APPLY NOW	134
EXCELLENT FACILITIES	16		
AMAZING EXPERIENCES	20		

Welcome.

Accrington and Rossendale College is an **extraordinary** place to study.

Right now, you will be making valuable and informed choices about your future, and we are here to help you every step of the way.

No matter what your career aspirations, rest assured that with our phenomenal teaching and extensive wraparound support you will receive the best education possible to get you prepared for your next steps.

There truly has never been a better time to join Accrington and Rossendale College. Led by one of the highest performing Colleges in the country, Nelson and Colne College, you can expect the same high quality teaching and exceptional wraparound support as you would from our sister College. You will also benefit from the recent £4million investment we have made to the campus and facilities - to ensure you have the best possible start on your career journey. YOUR future is our number one priority.

Throughout this prospectus, you can find out more about life at Accrington and Rossendale College.

Our innovative curriculum extends to a broad range of Vocational and Technical courses that will lead to rewarding careers and occupations, and Apprenticeships with leading local employers. During your time with us you will benefit from a tailored study programme, aligned to your career aims, as well as strong employer links, excellent partnerships, dedicated support and an extensive extracurricular programme.

We are proud to see our alumni progress onto exciting and fulfilling degree courses and hugely rewarding careers and professions. Every year, we see our students going to some of the top universities in the country, into Apprenticeships and working for well-established companies - and we now look forward to helping you do the same, as you find your extraordinary with us.



Amanda Melton CBE
Principal and Chief Executive at
Nelson and Colne College Group

 @NCCollPrincipal

Find out more about our Open Events at www.accross.ac.uk >>>





Number 1

**college in Lancashire
for 16-18 Advanced
Apprenticeships**

Number 1

**in the country for
student satisfaction**

Based on the latest Government data.

Exciting Career Progression.

We are a career College, passionate about helping all our students progress into positive and rewarding roles in their chosen sector.

Every year, we are thrilled to support our students as they secure top Apprenticeships and employment opportunities. No matter what your aspiration, we can help you get there.

“ College was a brilliant experience. My course was excellent and I found making friends easy. I enjoyed great relationships with my course teachers who were extremely helpful and supportive, and very knowledgeable about their subject. ”

Jack Prince

Progressing into a career as a Marine Engineer in the British Army



“ The tutors are great. I've had lots of support, particularly during lockdown - the online courses were set up really well. I am now working for a housing association, which is great. I plan to work my way up the career ladder and then become self employed. ”

Sammuel Harling

Secured an Apprenticeship with Onward Homes

High Quality Teaching and Learning.

We pride ourselves on a phenomenal teaching and learning experience. Our teachers are passionate subject and industry experts, who will help you develop the vital skills and knowledge you need to succeed on your chosen pathway.

Our teachers care about YOUR career journey, and will help you both inside and outside of the classroom to get you as prepared as possible for your next steps. From an engaging curriculum, to extensive wraparound support - including subject workshops and extracurricular opportunities; you are guaranteed a high quality educational experience.

“ I really enjoyed my time at Accrington and Rossendale College, as I have been able to learn new skills, create amazing friendships and I had the best teachers to help guide and support me along my journey. ”

Focusing on Your Future.

Industry Days

Each year, we hold a series of Industry Days to inspire students studying Vocational subjects. You will enrich your classroom learning and gain industry relevant insight into your chosen career route with these in-depth sector focused days.

You will also make valuable employer connections for your future, and continue to build your skills and knowledge for your chosen sector.

“ I gained a lot of confidence from the Industry Day and it has helped me focus and go for the job I want in the future. ”

Opportunities That Inspire.

We have exceptional partnerships with a broad range of employers from different sectors, including key partnerships with large sector organisations such as the East Lancashire Hospitals NHS Trust.

These partnerships provide quality training, experiences and opportunities to our students, while benefiting the local community.

- ★ WORK PLACEMENTS
- ★ BUSINESS MENTORS
- ★ VOLUNTEERING
- ★ GUEST SPEAKERS
- ★ INDUSTRY VISITS
- ★ COMMUNITY PROJECTS

“ I became a coach with Burnley FC in the Community while at College, and this opportunity only came about because of the unique partnership with Burnley FC in the Community. I’ve developed a huge amount of confidence through coaching, as well as gaining valuable insight and experience of working with different age groups and abilities. ”

JUST SOME OF OUR KEY PARTNERS



Modern and Flexible Spaces.

Here at College, we have a wide range of facilities to support you both inside and outside of the classroom.

Our College campus has undergone a major £4million redevelopment. With new innovative study spaces, industry-standard facilities and outdoor landscaping, we are committed to investing in your future.



WIDE RANGE OF SOCIAL AND STUDY SPACES



DEDICATED PC ZONE



DROP-IN LEARNER SERVICES AREA

EXCELLENT FACILITIES | MODERN AND FLEXIBLE SPACES

£4million
campus
investment



Industry-ready Facilities.

As a career College, we aim to replicate the work environment as much as possible for our students.

Further redevelopment includes brand new industry-standard Hair and Beauty salons, and a purpose-built Construction and Automotive Centre; both facilities have been designed to respond to the needs of both of these fast-moving sectors.



FITNESS SPACES INCLUDING
SPORTS HALL, 3G PITCH AND GYM



PURPOSE-BUILT WORKSHOPS



MODERN HAIR AND BEAUTY SALONS

Go The Extra Mile.

We are committed to developing and broadening your personal and professional skills with an extensive extracurricular offer.

Aligned to the Five Ways to Wellbeing, our extracurricular activities will complement your studies - whether you are looking to learn a new skill, engage in a sporting activity, explore volunteering opportunities or broaden your academic horizons.

It will also put you a step ahead of your competition when applying for coveted university, Apprenticeship or employment opportunities.

- ★ VOLUNTEERING
- ★ SPORT
- ★ CAREER AND LIFE SKILLS
- ★ DUKE OF EDINBURGH'S AWARD
- ★ NATIONAL AND GLOBAL AWARENESS EVENTS



Putting You First.

We are committed to providing a safe environment for all our students. We will support you to overcome personal issues and build resilience skills, to be successful both at College and in the future.

Your safety is of upmost importance to us and we pride ourselves on making sure College is a happy, secure and enjoyable experience for all.

- ★ COUNSELLING
- ★ COLLEGE NURSE
- ★ SAFEGUARDING AND WELFARE
- ★ HEALTH AND WELLBEING
- ★ LEARNING SUPPORT
- ★ SAFETY AND ENGAGEMENT OFFICERS

“ I would definitely recommend this College to others as I believe that I would not have received the same support from any other College or sixth form. ”



Extensive Financial Support.

At Accrington and Rossendale College, we offer extensive financial support packages to ensure that there are no monetary barriers to your education.

Support packages are tailored to individual needs, to help you throughout your time at College and include funding for bus travel, equipment and meals.

All students arriving before 9am each day can enjoy a **FREE** healthy breakfast in our Refectory. Free fruit is available to all our students while in College.

- ★ FREE COLLEGE BUS TRAVEL
- ★ SUBSIDISED TRANSDEV BUS PASS
- ★ SUPPORT WITH COSTS
- ★ FREE COLLEGE MEALS
- ★ BURSARIES
- ★ COSTS FOR EQUIPMENT, KIT AND MATERIALS



“ Find a job you love
and you’ll never work
a day in your life. ”

Your Future in Mind.

Careers Zone

Our expert Careers Zone Team are here to support you as you plan for your next steps after College.

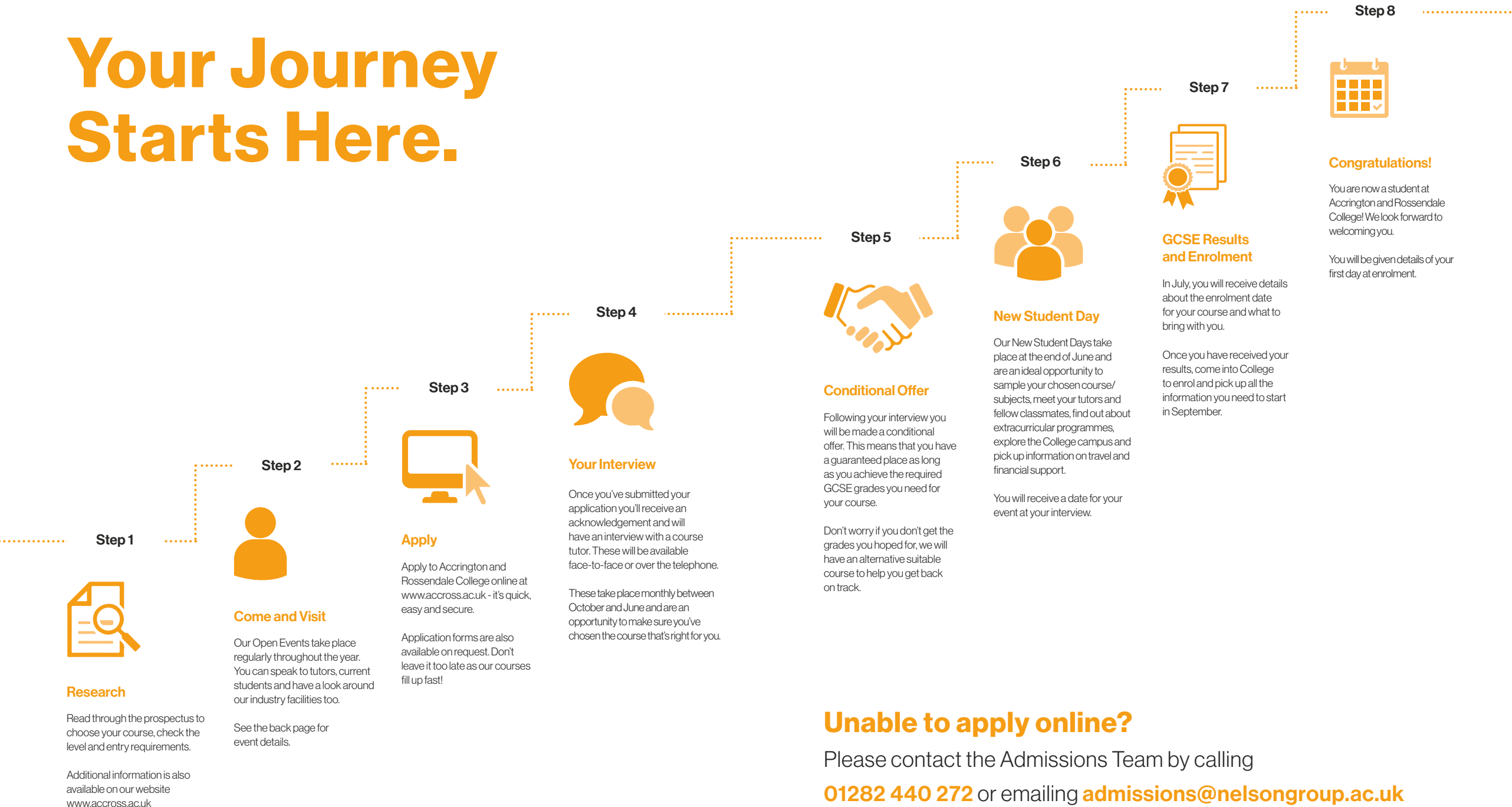
Their service is individualised to your needs, and is designed to get you a step closer to your career goals.

Whether you want support preparing for university or employment, want to know more about the different career opportunities available to you or you are unsure of your options, our expert team can help you.

UCAS

- ★ UNIVERSITY SUPPORT
- ★ CV DEVELOPMENT AND INTERVIEW TECHNIQUES
- ★ PERSONALISED CAREERS ADVICE
- ★ VOLUNTEERING, WORK PLACEMENT AND PART-TIME JOB OPPORTUNITIES
- ★ PERSONAL STATEMENT GUIDANCE

Your Journey Starts Here.





100%

Advanced Vocational Pass Rate



Vocational Contents.

Why Vocational?	32
Vocational Levels	34
Your Tailored Study Package	40
Burnley FC Shadow Youth Team	44
Business	48
Construction	54
Creative Media	64
Digital	68
Education and Childcare	74
Hairdressing and Beauty	80
Health and Social Care	86
Law, Justice and Protective Services	92
Motor Vehicle	96
Sport	102

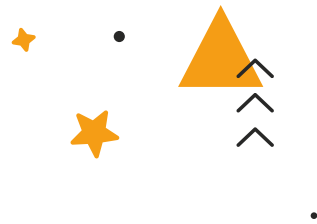
**Engineering, Science
and A Level courses**

Available at our sister college,
Nelson and Colne College.

**NELSON & COLNE
COLLEGE**

SIXTH FORM

Is Vocational Right for Me?



Choosing the **right type of qualification** for your future career can be a difficult decision.

Here is some useful information about Vocational Courses to help you make up your mind.



- ★ You will learn real industry skills designed to make you competitive in the job market
- ★ Vocational qualifications will help you progress directly into employment, an Apprenticeship, or university
- ★ They are available in a range of subjects, including: Business, Hairdressing, Education and Childcare, Digital, Health and Social Care and many more
- ★ We have made huge investments in industry facilities and latest technologies to ensure you are 'career ready'
- ★ A Vocational route is ideal if you enjoy practical, hands-on learning, and a mix of assessment styles
- ★ You will be taught by professional tutors with great industry experience and links
- ★ A two-year full-time Level 3 programme is equivalent to three A Levels

T Levels.

The College has been working in collaboration with employers and sector leaders to introduce new trailblazing qualifications for industry.

What are T Levels?

T Levels are ground breaking two-year advanced qualifications that offer students a mixture of classroom-based learning and 'on-the-job' experience. They are designed in collaboration with employers, are the equivalent to three A Levels, and include an exciting 45 day industry placement in your chosen sector.

T Levels are designed to give students the knowledge, skills and experience companies are looking for, helping you to step straight into your chosen career, higher level Apprenticeships or onto a degree. T Levels are equivalent to three A Levels.

What will I study?

As part of your classroom learning you will study challenging subject relevant topics to give you the core knowledge and skills needed to work in the sector, as well as enhance your broader skills in English and Maths. You will be assessed through a range of external exams, assessments and coursework.

What next?

T Levels will provide the knowledge and experience you need to enter skilled employment in a particular occupation or continue with further study.

Students achieving this qualification will have an advantage when applying for jobs within their chosen industry or when progressing into further study.

Learn more at www.tlevels.gov.uk

We currently offer T Levels in:

- ★ BUSINESS AND ADMINISTRATION
- ★ DIGITAL PRODUCTION, DESIGN AND DEVELOPMENT
- ★ EDUCATION AND CHILDCARE
- ★ HEALTH

Which Level Course?



The grades you achieve in your GCSEs will determine which level Vocational programme you start on at College. Most of our courses will require a grade profile that matches the diagram opposite.

Some qualifications, however, will require you to have an underpinning technical knowledge of the subject, so you will have to start at Level 1 to ensure you have these essential skills. The diagram opposite demonstrates the different qualification levels and the progression routes available. Use your predicted grades to see what level Vocational programme you will start at. Further information can also be found on the individual course pages.



Students who do not achieve a grade 4 or above in Mathematics and English Language at school will be required to resit these qualifications alongside their course.

VOCATIONAL | WHICH LEVEL COURSE?

Employment, University or an Apprenticeship

You may also choose to progress directly on to an Apprenticeship from a Level 2 programme.

LEVEL 3

A minimum GCSE profile of 5 GCSEs at grade 4, including Maths or English.

2 year course

Some Level 3 courses require specific entry requirements. Further details of these can be found on the individual course pages. T Levels require both Maths and English at grade 4 and some may require Science.

LEVEL 2

GCSE profile of 4 GCSEs at grade 3, including Maths or English.

1 year course

Some Level 2 courses require specific entry requirements. Further details of these can be found on the individual course pages.

LEVEL 1

GCSE profile of 5 GCSEs at grade 2, including Maths or English.

1 year course

ENTRY LEVEL

GCSE profile of 1s, Us or equivalent. Exceptions may be made for students with no qualifications.

1 year per level

Entry Level

Foundation Programmes

Foundation Programmes are designed to give you a route onto higher level courses in your chosen Vocational area. At this level, you will develop basic skills and knowledge of your chosen subject, alongside English and Maths.

You will also develop your personal skills such as communication skills, team work and problem solving. Your programme will include work experience within your chosen sector. Courses are available across a wide range of Vocational subjects, which are designed to offer you tailored support to help you progress on to further studies or to get you ready for an Apprenticeship.

Choices

The Choices programme is for students with identified support needs. It is a very tailored programme, designed around your individual support needs, and work experience and projects will form a key part of the course.

We work with a range of partners to offer you exciting placements to enhance your experiences and skills.

Your course will be made up of the following elements;

- Skills for personal development
- Work experience (pre-internship and supported internship)
- Project work and volunteering
- Tailored support
- English and Maths
- Vocational tasters
- Trips and visits



ESOL

Our ESOL programme is also available for students where English is their second language.

This programme is designed to help you develop your English speaking, listening, reading and writing skills through a wide range of experiences.

Level 1

Foundation Programmes

At Level 1, you will gain an insight into your chosen Vocational subject and further develop your skills in English and Maths.

You will also be supported to build key personal skills such as communication, problem-solving, and team work to help you take those first steps towards your chosen career. You will undertake a work placement to find out what it's like to work in your chosen sector and build essential skills for the workplace.

Subjects available include:

★ BUSINESS AND ICT

★ CONSTRUCTION

★ EDUCATION AND CHILDCARE

★ HAIR AND BEAUTY

★ HEALTH AND SOCIAL CARE

★ SPORT

On successful completion of your Level 1 course you may be able to progress on to further studies with a Level 2 course in your chosen subject or onto an Apprenticeship, where appropriate.



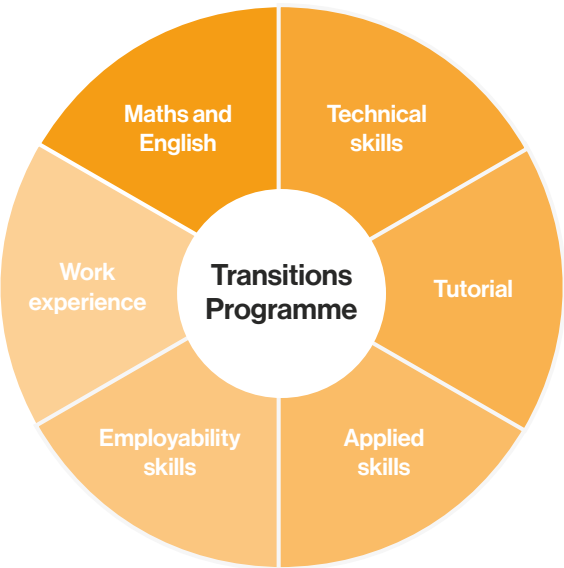
Level 2

TRANSITIONS

Transitions Programmes

Our Transitions Programmes are designed to get Level 2 students ready for a Level 3 course and a career in your chosen sector. As part of this tailored programme, you will receive individualised support and opportunities to prepare you for your next steps.

What the course is made up of:



Maths and English

If you have not achieved a grade 4 at GCSE, you will be supported in retaking your Maths and English. All students will attend Maths and English sessions that will be related to the course.

Technical skills

Individualised for your area of study, we will develop your technical skills and introduce you to key topics that you will explore further at Level 3 or in the workplace.

Applied skills

You will have the exciting opportunity to apply your technical knowledge by getting involved in employer-set projects, designed to prepare you for a rewarding career in industry. There will also be opportunities for trips, visits and guest speakers.

Employability skills

You will be supported to develop key personal skills such as communication, confidence, resilience, employability and presentation skills.

Work experience

We will work with you to find a suitable placement aligned to your career aspirations, where you can gain 'on the floor' experience.

Level 3

Advanced Vocational Programmes

Our Level 3 courses are designed to get you ready for your next steps after College, be it university, an Apprenticeship or employment. The qualifications will be tailored around you and your career aspirations.

What the course is made up of:



Level 3 qualifications are the equivalent to A Levels, and are an advanced programme of study designed to prepare you for a successful future in your chosen sector.

We have a wide range of Level 3 qualifications that include BTECs and CACHE programmes, as well as our new T Levels.

Designed by employers and sector leaders, T Levels are a two-year advanced qualification, equivalent to three A Levels, where you can combine classroom study with a work placement.

T Level students spend **80% of their time in the classroom** and **20% on a 45-day work placement**, to equip them with the skills they are looking for and really prepare them for a successful future in their chosen industry.

Personalised Programmes.

Your study programme is designed around you and your career aspirations. We will work with you to develop an individualised programme to meet your needs and prepare you for your next steps after College. Here's how it works...

Your Study Programme and Tutorials

You will choose a Vocational programme matched to your career aim. This programme will be tailored to your personal goals and focused on developing the essential technical skills, experiences and knowledge needed for your chosen industry. Our courses are highly practical and your progress will be assessed through a range of methods which may include observations, theory-based tests and some exams. This is to ensure you can demonstrate the skills and knowledge that employers and universities alike are looking for.

Whichever course you choose, you will be taught by industry experts within your field, who are experienced, knowledgeable and up-to-date with the latest industry practice. They will provide you with one-to-one support throughout your time with us and will help to push you to achieve your goals.



“ I have met new friends and I have learnt new things and I have enjoyed doing a course in something I love. It’s a good environment and there are good tutors and they help you when you need the support. ”

Ruby Cornwall
Studying Sports and Exercise Science
at the University of Derby



Industry Week Highlights.



Health and Social Care and Childcare students meet with industry professionals to learn more about careers in their chosen sectors.



Creative Arts and Media students visit In-Situ in Pendle on Industry Careers Day and enjoy a round table 'talkaoke' discussion with Paul Hartley.



Digital students learn more about the fast-paced changes in the IT world during their Industry Careers Day.



Members of the East Lancashire Hospitals NHS Trust Team inspire students in Science with insightful careers advice and guidance.

VOCATIONAL | YOUR TAILORED STUDY PACKAGE

Facilities

The College has invested heavily in industry facilities and equipment to support you in gaining relevant and specialist skills for your chosen career field. Whichever course you choose, you will learn in a professional and inspiring environment, practising the skills required in your industry, building your skills, confidence and knowledge to impress future employers and universities.

Work Placement

All of our Vocational programmes include work experience linked to your career aspirations as an essential part of your course. These placements are aimed at expanding your knowledge and skills and gaining a deeper understanding of your chosen career. For some courses you may get the opportunity to take part in an extended Industry Placement, where you'll spend additional time to a normal work placement learning 'on the job' in the workplace.

You'll benefit from professional mentoring and gain impressive knowledge and skills for progression into the industry. Some of our students have managed to secure full-time employment and Apprenticeships with their employer from their Industry Placement. You will have support in finding your placement through your tutors and our dedicated Work Placement Team.

Extracurricular

Alongside your course, you will be encouraged to participate in a range of extracurricular activities, to help you develop career and life skills, and to support your health and wellbeing. There is a wide range of extracurricular activities on offer ranging from sport and leisure activities, to trips and visits, community projects, charity fundraising, health and wellbeing events and more! This is all designed to make sure you get the most out of your College experience, as well as supporting applications to university, employment and Apprenticeships.

We offer a Pre-Professional Programme in Teaching to support any students looking to start their career in Education.

Industry Links

The College has excellent links with industry. We work closely with a wide range of employers both locally and further afield, providing you with exceptional opportunities to engage with industry professionals. Opportunities may include employer mentoring, working on client briefs, mock interviews with employers, industry events and skills competitions. We also run a wide range of Industry Careers Days where various industry leaders visit the College to share their knowledge and experience. You will have the opportunity to 'ask the experts' questions about their field, as well as being inspired by their journeys and gaining advice to help you achieve your goals.



“ As part of my course we took part in work experience. It allowed me to get a feel of what working in the sporting industry would be like. It was challenging but also enjoyable and made me look forward to seeing what the future holds for me. ”

Becky Holden

Studying Sport Psychology at
Liverpool John Moores University

Burnley FC Shadow Youth Team.

As a student on the Burnley FC Shadow Youth Team programme you will develop your leadership, teamwork and technical knowledge to support your career in sport.

Education and training from experienced industry professionals will prepare you for a successful transition to the world of work, an Apprenticeship or higher education. You will also develop your technical footballing ability through training and competition in a range of regional and national leagues.

Top skills for this industry...



Strong teamwork and leadership skills



Passion for fitness and nutrition



Problem solving and self-reliance

Some of the employers we work with...



Jordan Glover



School

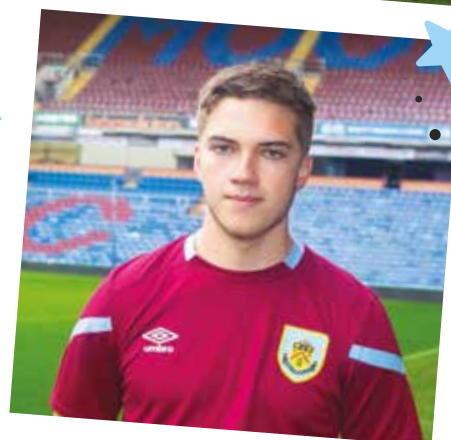
Todmorden High School

Achieved

Triple Distinction* in Burnley FC Shadow Youth Team

Where Next?

Studying Strength and Conditioning at the University of Central Lancashire



VOCATIONAL | BURNLEY FC SHADOW YOUTH TEAM



Thinking of studying Burnley FC Shadow Youth Team?

Also available at our Nelson campus! Find out more at www.nelson.ac.uk

Unique partnership with Burnley Football Club



**Burnley FC
Shadow
Youth Team**

Football & Education Programme



**Girls'
Post-16
Academy**

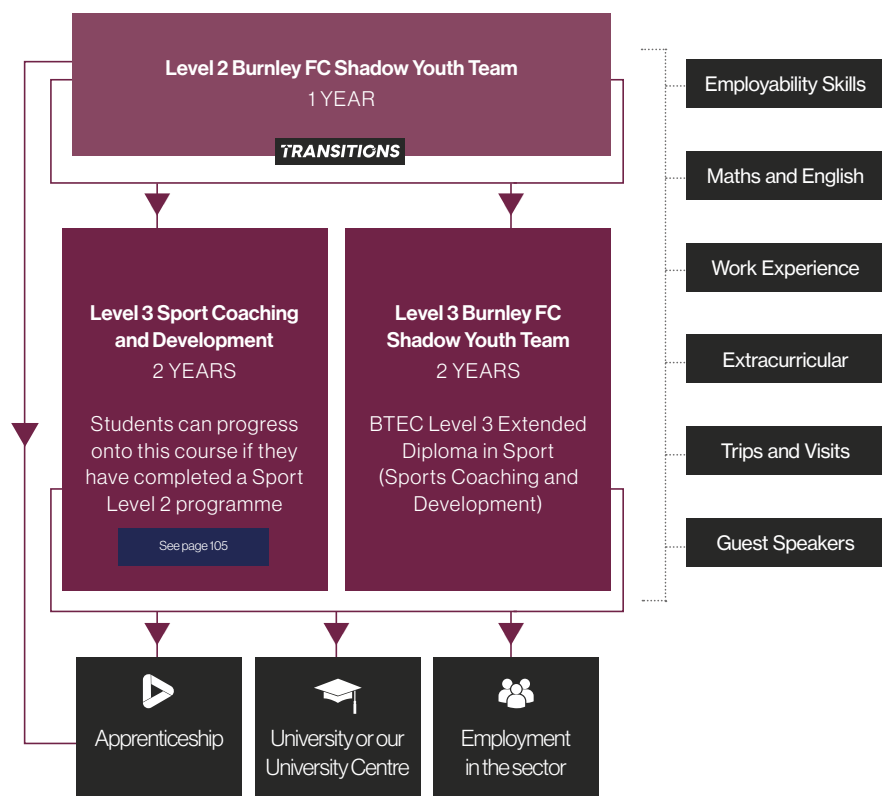
Football & Education Programme



Burnley FC Shadow Youth Team.

As a student on the Burnley FC Shadow Youth Team programme, you can not only expect the highest quality of training from industry experts, but also a wide range of exciting opportunities to enhance your learning. You will have the opportunity to progress onto Higher Education, or a role in a professional football club.

Progression Pathways...



BFC Girls' Academy available alongside other College courses.

Level 2 Burnley FC Shadow Youth Team



Male and female squads available

1 YEAR COURSE

TRANSITIONS

Vocational Entry Requirements

4 GCSEs at grade 3 or above including either Mathematics or English, or a Level 1 equivalent in this area and GCSE Mathematics or English at grade 3 or above. Plus a successful trial.

Description

The Burnley FC Shadow Youth Team programme is a unique and individualised programme for Level 2 students, which will support you in developing the key personal, technical and professional skills you need in order to get ahead, whether you want to progress to Level 3 or employment in your chosen sector.

This programme is made up of subject specific practical skills including First Aid training, coaching and fitness training and fitness testing. You will also develop key employability skills including commitment, resilience, initiative, confidence, and professionalism.

Areas of study may include Leadership, Safe Working Practices and Communication with Children and Different Audiences. After completing this course, you will have the necessary skills to progress onto a Level 3 Sport qualification or an Apprenticeship.

There will be lots of opportunities for trips, visits, guest speakers, mentoring and work experience.

This is an exciting programme, designed to help you get ready for your next steps.

Level 3 Burnley FC Shadow Youth Team



Male and female squads available

2 YEAR COURSE

Vocational Entry Requirements

5 GCSEs at grade 4 or above including either Mathematics or English, or a Level 2 equivalent in this area and GCSE Mathematics or English at grade 4 or above. Plus a successful trial.

Description

The Burnley FC Shadow Youth Team offers a unique education and performance programme for those wishing to maximise their football talent. Students will represent the College, in partnership with Burnley FC in the Community, in a range of National Leagues operated by the English Football League and the Association of Colleges.

Students will benefit from a high quality coaching and playing experience, while studying towards a Level 3 Extended Diploma in Sports Coaching and Development. This will give you the skills, behaviours and knowledge to support a successful career in sport. You will get up to 12 hours of football coaching and competition per week, a full Level 3 academic qualification, opportunity to complete an FA Level 1 Coaching Badge and chance to work alongside your coaches to support Burnley FC home matches at Turf Moor.

From this programme you can progress to Higher Education, employment or an Apprenticeship.

Students from this programme also have the opportunity to pursue athletic scholarships at a range of American universities.

Business.

As a Business student, you will be taught by lecturers from a wide range of professional backgrounds such as marketing, retail, finance, and law.

You will be given exciting opportunities to enhance your classroom learning through work experience placements with local firms, trips to leading national organisations, guest speakers from industry, and more.

Top skills for this industry...

 Excellent communication and negotiating techniques

 Strong organisational skills

 Decision making skills

Some of the employers we work with...



Marium Shafique



School

Istituto Istruzione Superiore Virginio Bonifazi

Achieved

Triple Distinction* in Business

Where Next?

Studying Business Management at Lancaster University



National
BTEC Award
Winner

Thinking of studying Business?

Also available at our
Nelson campus!

Find out more at
www.nelson.ac.uk

Did you know?

In 2020, corporate businesses made up 73.6% of total businesses, with sole proprietors making up 15.7%.

Starting salaries in key functional areas of business such as marketing, operations, finance and human resources can be between £20,000 and £35,000.

VOCATIONAL | BUSINESS

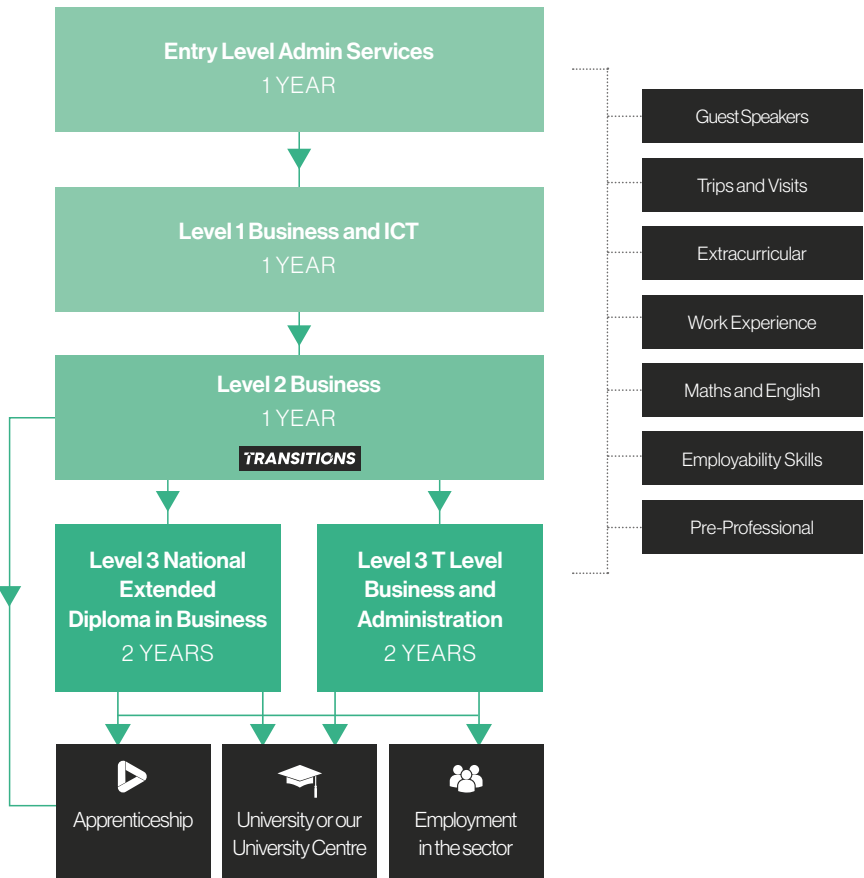




Business.

We are committed to ensuring you are on the right path to help you get ready for your future. No matter what level you start at, we will ensure you gain the skills and confidence to progress and succeed in your chosen sector.

Progression Pathways...



Top university destinations...



Level 2 Business

1 YEAR COURSE

TRANSITIONS

Vocational Entry Requirements

4 GCSEs at grade 3 or above including either Mathematics or English, or a Level 1 equivalent in this area and GCSE Mathematics or English at grade 3 or above.

Description

This course is part of our new Transitions Programme – a unique and individualised programme for Level 2 students. The course will support you in developing the key personal, technical and professional skills you need in order to get ahead, whether you want to progress to Level 3 or employment in your chosen sector.

The Business Transitions programme is made up of subject specific practical skills including presenting, report writing, teamwork and researching information. You will also develop key employability skills including commitment, resilience, initiative, confidence, and professionalism.

Areas of study may include: skills for employment, organisational structures, how businesses operate and preparing financial documentation.

We have close relationships with local and national businesses to help support your understanding of the business environment. Throughout the course there will be opportunities to meet with local employers at industry events and visit companies on field trips.

We currently hold close relationships with companies including Morrisons, Digital Advantage Lancashire, Community Rail Lancashire, RSM Accounting and Auditing and Jaguar Land Rover. Our networks and partnerships with employers are constantly growing. Studying the course with us will put you in a prime position to grow your experiences with industry and gain practical experiences outside the classroom.

After completing this course with us, you will have the necessary skills to progress onto a Level 3 course in Business including a T Level or an Apprenticeship. There will be lots of opportunities for trips, visits, guest speakers, mentoring and work experience. This is an exciting programme, designed to help you get ready for your next steps.

Level 3 National Extended Diploma in Business

2 YEAR COURSE

Vocational Entry Requirements

5 GCSEs at grade 4 or above including either Mathematics or English, or a Level 2 equivalent in this area and GCSE Mathematics or English at grade 4 or above.

Description

The UK presents to you a multitude of career and entrepreneurial opportunities as the sixth largest economy globally. Studying Level 3 Business will provide you with the acumen and technical expertise to help you take these opportunities and succeed within the ever-changing and dynamic world of business.

You will focus on studying modules embedded in the demands of the modern business environment such as Accounting and Finance, Marketing, Human Resources, International Business, Business Law and Event Management.

Each of the 13 unique modules studied will enable you to attain specific knowledge related to individual topics studied, as well as providing opportunities to enhance your vocational development and skillset.

The course has strong academic elements to enhance work-based knowledge, such as several external examinations, but is firmly embedded in vocational skill enhancement.

You will conduct a variety of activities to aid your personal development including presentations, employer-based projects and professional report writing.

The course will give you the opportunity to network with a range of employers and you will have regular contact with guest speakers and local business leaders. Work experience forms a key part of the course and tutors will work closely with you to ensure you get the most practical and valuable experience possible, linked to your career aspirations.

For students with equivalent qualifications and experience, this will be discussed and considered at interview.

NEW FOR
2022

T Level | Level 3

Business and Administration.

2 YEAR COURSE

Vocational Entry Requirements

5 GCSEs at grade 4 or above including Mathematics and English, or a Level 2 equivalent in this area and GCSE Mathematics and English at grade 4 or above.

The T Level is a ground-breaking two-year Level 3 study programme that will offer students a mixture of classroom-based learning and on-the-job experience. T Level students spend 80% of the course in the classroom, learning the skills that employers need.

The other 20% is an industry placement, where students put these skills into action. A Vocational alternative to A Levels and Apprenticeships, the T Level has been launched as part of the Government's review of Vocational education, under the Skills Plan.

They have been collaboratively developed by the Department for Education (DfE), the Institute for Apprenticeships (IfA), education providers and employers.

The purpose of the Level 3 Technical qualification in Business and Administration is to ensure that students have the knowledge and skills needed to progress into highly skilled employment, an Apprenticeship or higher-level study.

What will I learn?

- Business Context
- Human Resources
- Quality and Compliance
- Finance
- Policies and Procedures
- Project and Change Management
- Business Behaviours

As a part of the course you will also complete an employer-set project. The employer-set project ensures students have the opportunity to combine core knowledge and skills to develop a substantial piece of work in response to an employer-set brief.

The employer-set project forms part of the Technical Qualification and is a separate part of the T Level programme to the Industry Placement.

T-LEVELS
THE NEXT LEVEL QUALIFICATION

VOCATIONAL | BUSINESS

Layout of the two-year programme

In Year 1, you will study Management and Administration, which will involve an external examination and an employer-set project. You will learn a whole host of knowledge applicable to this field. All of the learning will be applicable to the external exam, the employer-set project and the industrial placement you will partake in with a local employer.

When you enter Year 2 of the course you will focus on Team Leadership/Management and learn a range of knowledge and skills required to enter employment in that occupational specialism. English, Maths and digital competence will be integrated where relevant.

The T Level Industry placement will take place with a local employer and you will be required to spend between 315 – 420 hours of the course with a local business gaining invaluable work-based competencies and experiences. All classroom learning will be applicable to this placement and you will be applying all skills and knowledge attained throughout the course while in the workplace. Support for travel and subsistence costs of placements will be assessed on an individual basis with each student and the employer involved.

To be applicable for the course you are required to have achieved a Grade 4 in English and Maths or Level 2 functional skills (pass). The T Level transition programme is available to students who have not yet attained these grades in English and Maths.



Construction.

As a Construction student, you can not only expect the highest quality of training from industry experts on industry standard equipment, but also a wide range of exciting opportunities to enhance your learning experience.

You will be helped in tailoring your study programme, through work experience placements, trips, guest speakers, and more.

Top skills for this industry...

 Excellent communication skills

 Strong practical skills

 Critical reasoning skills

Some of the employers we work with...



Jack Mounsey



School

Alder Grange School

Achieved

Level 1 Construction and Engineering Services

Where Next?

Secured an Apprenticeship with
Rossendale Driveways and Patios



Thinking of studying Construction?

You may also be interested in Engineering, available at our Nelson campus!

Find out more at
www.nelson.ac.uk

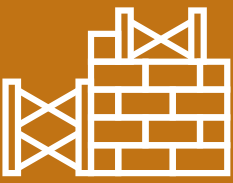
Did you know?

The Construction industry contributes £117billion to the UK economy, which is around 6% of total income. Much of this revenue comes from the average of almost 200,000 new houses being built each year.

The sector employs around 2.4 million people, many of who are self-employed.

VOCATIONAL | CONSTRUCTION





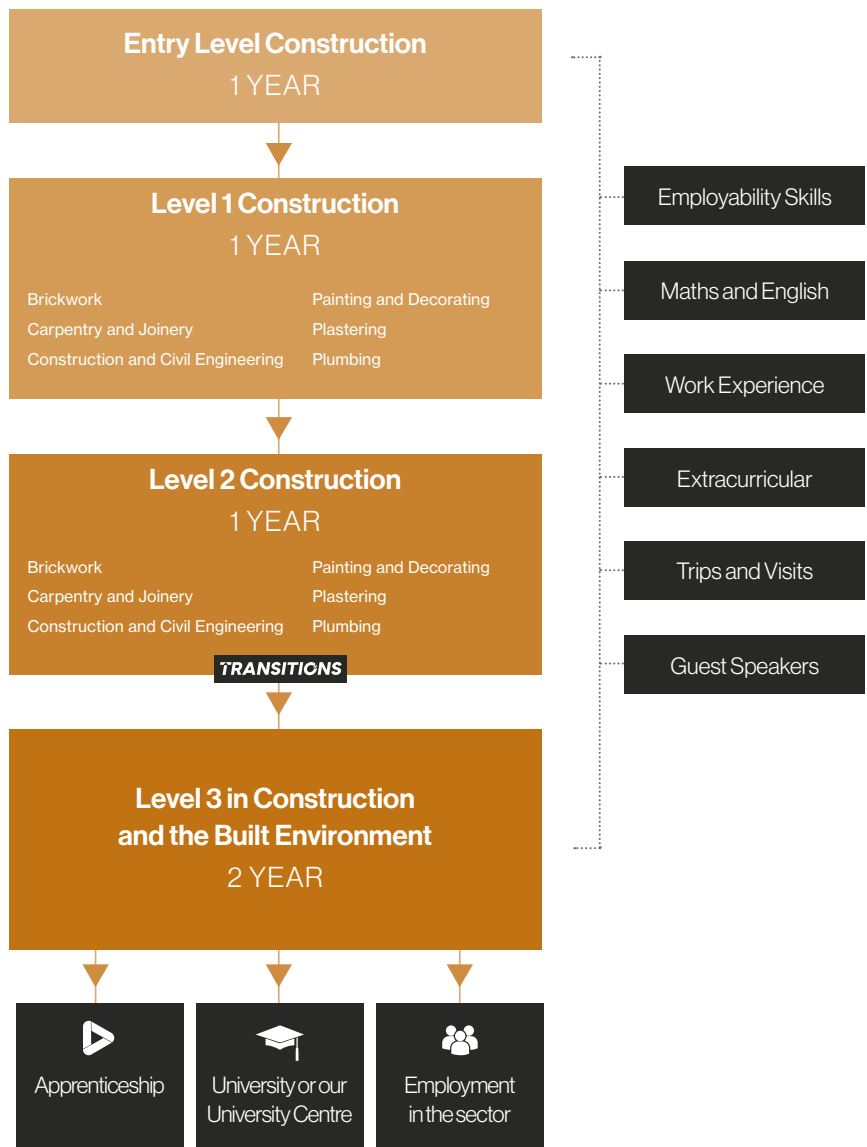
CAREER
PATHWAYS

ARCHITECT
BUILDING
SERVICES
ENGINEER
CONSTRUCTION
MANAGER
HEATING
ENGINEER
CIVIL
ENGINEER
STRUCTURAL
ENGINEER
PLUMBER
PLUS MANY MORE...

Construction.

We are committed to ensuring you are on the right path to help you get ready for your future. No matter what level you start at, we will ensure you gain the skills and confidence to progress and succeed in your chosen sector.

Progression Pathways...



Level 1 Brickwork

1 YEAR COURSE

Vocational Entry Requirements

2 GCSEs at grade 2 or above including Mathematics and English.

Description

This course will give students the opportunity to engage in learning and develop a range of skills and techniques, personal skills and attributes essential for successful performance in working life. It will also develop your knowledge and awareness of brickwork.

Typically the course covers the basic aspects of bricklaying such as half brick walling, solid walling, cavity walling, mixing of materials and setting out a basic structure.

Units include:

- Health, Safety and Welfare in Construction
- Knowledge of Technical Information
- Knowledge of Construction Technology
- Constructing Block Walling
- Constructing Brick Walling
- Constructing Cavity Walling
- Setting out Basic Structures
- Mixing Construction Materials

Level 2 Brickwork

1 YEAR COURSE

TRANSITIONS

Vocational Entry Requirements

Students are required to have completed the Level 1 Brickwork course, or equivalent.

Description

This course is part of our new Transitions Programme – a unique and individualised programme for Level 2 students. The course will support you in developing the key personal, technical and professional skills you need in order to get ahead, whether you want to progress to Level 3 or employment in your chosen sector.

The Bricklaying Transitions programme is made up of subject specific practical skills including knowledge of building and construction and First Aid training. You will also develop key employability skills including commitment, resilience, initiative, confidence, and professionalism.

Areas of study may include Safe Working Practices, Enterprise Skills and Bricklaying. You will also work on your Maths and English skills. After completing this course, you will have the necessary skills to progress into employment or an Apprenticeship.

There will be lots of opportunities for trips, visits, guest speakers, mentoring and work experience. This is an exciting programme, designed to help you get ready for your next steps.



Level 1 Carpentry and Joinery

1 YEAR COURSE

Vocational Entry Requirements

2 GCSEs at grade 2 or above including Mathematics and English.

Description

This course will give students the opportunity to engage in learning and develop a range of skills and techniques, personal skills and attributes essential for successful performance in working life. It will also develop your knowledge and awareness of carpentry and joinery. Typically the course covers an introduction to both site and bench craft skills.

Units include:

- Health, Safety and Welfare in Construction
- Knowledge of Technical Information
- Knowledge of Construction Technology
- Woodworking Joints
- Hand Tools
- Portable Power Tools

Level 2 Carpentry and Joinery

1 YEAR COURSE

TRANSITIONS

Vocational Entry Requirements

Students are required to have completed the Level 1 Carpentry and Joinery course, or equivalent.

Description

This course is part of our new Transitions Programme – a unique and individualised programme for Level 2 students. The course will support you in developing the key personal, technical and professional skills you need in order to get ahead, whether you want to progress to Level 3 or employment in your chosen sector.

The Carpentry and Joinery Transitions programme is made up of subject specific practical skills including site joinery, bench joinery and First Aid training. You will also develop key employability skills including commitment, resilience, initiative, confidence, and professionalism.

Areas of study may include Safe Working Practices, Enterprise Skills and Awareness of Different Client Groups. You will also work on your Maths and English skills. After completing this course, you will have the necessary skills to progress into employment or an Apprenticeship.

There will be lots of opportunities for trips, visits, guest speakers, mentoring and work experience. This is an exciting programme, designed to help you get ready for your next steps.

Level 1 Construction and Civil Engineering

1 YEAR COURSE

Vocational Entry Requirements

2 GCSEs at grade 2 or above including Mathematics and English.

Description

This course will give students the opportunity to engage in learning and develop a range of skills and techniques, personal skills and attributes essential for successful performance in working life. It will also develop your knowledge and awareness of general construction and civil engineering activities. Typically the course covers basic ground work tasks such as sub bases, laying flags and blocks, mixing and laying concrete.

Units include:

- Health, Safety and Welfare in Construction
- Knowledge of Technical Information
- Knowledge of Construction Technology
- Cutting Construction Materials
- Laying and Finishing Concrete
- Laying Modular Paving
- Portable Power Tools

Level 2 Construction and Civil Engineering

1 YEAR COURSE

TRANSITIONS

Vocational Entry Requirements

Students are required to have completed the Level 1 Construction and Civil Engineering course, or equivalent and GCSE Mathematics and English at grade 4 or above.

Description

On this course you will have the opportunity to engage and develop your skills that you gained from the previous Level 1 course. The course covers areas such as road-building, plant maintenance and formwork.

You will also learn how to use various hand tools and cutting equipment, preparing and placing concrete, preparing, laying and finishing floor screeds, mixing various building materials by hand and machine, laying domestic drainage and setting up signage, lighting and guarding when working on site e.g. for paths or roads.

Units include:

- Health, Safety and Welfare in Construction
- Understanding Technical Information
- Understanding Civil Engineering Technology
- Establishing Work Area Protection
- Laying Domestic Drainage
- Placing and Finishing Non Specialist Concrete



Level 1 Painting and Decorating

1 YEAR COURSE

Vocational Entry Requirements

2 GCSEs at grade 2 or above including Mathematics and English.

Description

This course will give students the opportunity to engage in learning and develop a range of skills and techniques, personal skills and attributes essential for successful performance in working life. It will also develop your knowledge and awareness of painting and decorating. Typically the course covers the preparation of surfaces, decorative finishes, application of coatings, application of wall coverings and working at height.

Units include:

- Health, Safety and Welfare in Construction
- Knowledge of Technical Information
- Knowledge of Construction Technology
- Erecting and Dismantling Access Equipment
- Preparing common surface types for decoration
- Applying Basic Paint Systems by Brush and Roller
- Applying Foundation and Technical Papers
- Producing Standard Decorative Finishes

Level 2 Painting and Decorating

1 YEAR COURSE **TRANSITIONS**

Vocational Entry Requirements

Students are required to have completed the Level 1 Painting and Decorating course, or equivalent.

Description

This course is part of our new Transitions Programme – a unique and individualised programme for Level 2 students, which will support you in developing the key personal, technical and professional skills you need in order to get ahead, whether you want to progress to Level 3 or employment in your chosen sector.

The Painting and Decorating Transitions programme is made up of subject specific practical skills including preparing and using materials and First Aid training. You will also develop key employability skills including commitment, resilience, initiative, confidence, and professionalism.

Areas of study may include Safe Working Practices, Enterprise Skills and Awareness of Different Client Groups. You will also work on your Maths and English skills. After completing this course, you will have the necessary skills to progress into employment or an Apprenticeship.

There will be lots of opportunities for trips, visits, guest speakers, mentoring and work experience. This is an exciting programme, designed to help you get ready for your next steps.

Level 1 Plastering

1 YEAR COURSE

Vocational Entry Requirements

2 GCSEs at grade 2 or above including Mathematics and English.

Description

This course will give students the opportunity to engage in learning and develop a range of skills and techniques, personal skills and attributes essential for successful performance in working life. It will also develop your knowledge and awareness of plastering.

Typically the course covers mixing of plasters, applying plasters to various backgrounds, forming moulds and floor screeding.

Units include:

- Health, Safety and Welfare in Construction
- Knowledge of Technical Information
- Knowledge of Construction Technology
- Preparing Background Surfaces
- Applying Plaster Materials to Backgrounds
- Producing Components from Moulds
- Forming Sand and Cement Screeds

Level 2 Plastering

1 YEAR COURSE **TRANSITIONS**

Vocational Entry Requirements

Students are required to have completed the Level 1 Plastering course, or equivalent.

Description

This course is part of our new Transitions Programme – a unique and individualised programme for Level 2 students. The course will support you in developing the key personal, technical and professional skills you need in order to get ahead, whether you want to progress to Level 3 or employment in your chosen sector.

The Plastering Transitions programme is made up of subject specific practical skills including mixing plasters, applying plasters, forming molds, floor screeding and First Aid training. You will also develop key employability skills including commitment, resilience, initiative, confidence, and professionalism.

Areas of study may include Safe Working Practices, Enterprise Skills and Awareness of Different Client Groups. You will also work on your Maths and English skills. After completing this course, you will have the necessary skills to progress into employment or an Apprenticeship.

There will be lots of opportunities for trips, visits, guest speakers, mentoring and work experience. This is an exciting programme, designed to help you get ready for your next steps.



NEW FOR
2022NEW FOR
2022

Level 1 Plumbing

1 YEAR COURSE

Vocational Entry Requirements

2 GCSEs at grade 2 or above including Mathematics and English.

Description

The Level 1 Plumbing is intended to give students an understanding of plumbing and heating. It consists of both knowledge and practical assessments which provide a platform to progress to the Level 2 in Plumbing.

You will benefit from outstanding teaching and learning by industry specialists, who will help you develop the skills, knowledge and behaviours required to pursue a career in this industry. If you see a future in the Building Services Engineering sector and want to be a Plumber or Plumbing and Heating Engineer, then this course provides the perfect first step.

This qualification will not qualify students to work as a Plumber or Plumbing and Heating Engineer, but may provide a platform for employment, an Apprenticeship or further study at Level 2.

Level 2 Plumbing

1 YEAR COURSE

TRANSITIONS

Vocational Entry Requirements

Students are required to have completed the Level 1 Plumbing course, or equivalent.

Description

The Level 2 Diploma in Plumbing Foundation is designed to provide individuals with the skills and understanding to allow a progression route to completion of the Diploma in Plumbing and Heating, Domestic Heating and Plumbing Foundation qualification.

You will benefit from outstanding teaching and learning by industry specialists who will help you develop the skills, knowledge and behaviours required to pursue a career in the Building Services Engineering Industry. This is the perfect course if you see a future as a Plumber or envisage a career as a Plumber or Plumbing and Heating Engineer.

You will develop knowledge and skills in the following areas in support of your career progression:

- Understanding and applying domestic cold water system installation and maintenance techniques
- Understanding and applying domestic hot water system installation and maintenance techniques
- Understanding and applying domestic central heating system installation and maintenance techniques
- Understanding and applying domestic rainwater system installation and maintenance techniques
- Understanding and applying domestic above ground drainage system installation and maintenance techniques

The qualification provides a platform to seek employment as a Plumber or Plumbing and Heating Engineer and complete a full plumbing Apprenticeship.

Level 3 Extended Diploma in Construction and the Built Environment

NEW FOR
2022

2 YEAR COURSE

Vocational Entry Requirements

5 GCSE's grade 4 or above including either Mathematics or English and preferably science.

Description

This Level 3 Construction and the Built Environment course aims to provide an understanding of the construction industry including health and safety, maths, science and materials, estimating and surveying.

This course will enable you to progress your career in the construction and built environment sector in jobs such as architecture, quantity surveying, building surveying, civil engineering, construction management and building services engineering. Many of these jobs combine office-based activities with on-site visits to projects and building sites.

You will develop knowledge skills and behaviour in the following areas in support of your career progression:

- Understanding and planning construction areas including the underpinning mathematics and science related to construction
- Understanding construction design and how to communicate your designs in drawings and specifications
- Understanding how to carry out site surveys to produce drawings and sections
- Understanding how to interpret design information and ensure the construction works are positioned correctly
- Understanding how to carry out surveys to assess the conditions of buildings
- Understanding how to calculate the cost of construction works and maintain the progress against the budget

Students completing this programme often go on to develop professional careers in the sector via Higher Education.



For students with equivalent qualifications and experience, this will be discussed and considered at interview.

Creative Media.

As a Creative Media student, you will receive high quality training from industry experts and take part in a range of exciting opportunities to enhance your learning experience.

You will be supported to meet your career aims through work experience placements, educational trips, guest speakers, live briefs for real clients and more.

Top skills for this industry...



Digital image making



Good organisation skills



Highly creative

Some of the employers we work with...



VOCATIONAL | CREATIVE MEDIA



Luke Moffat



School

Haslingden High School

Achieved

Distinction* and Double Distinction in Creative Arts and Media

Where Next?

Studying Film and Television Production at Edge Hill University



Thinking of studying Creative Media?

Creative Arts and Media available at our Nelson campus!

Find out more at www.nelson.ac.uk

Did you know?

The Creative industry in the UK is developing new jobs faster than other sectors and accounts for 9.6% of employment figures.

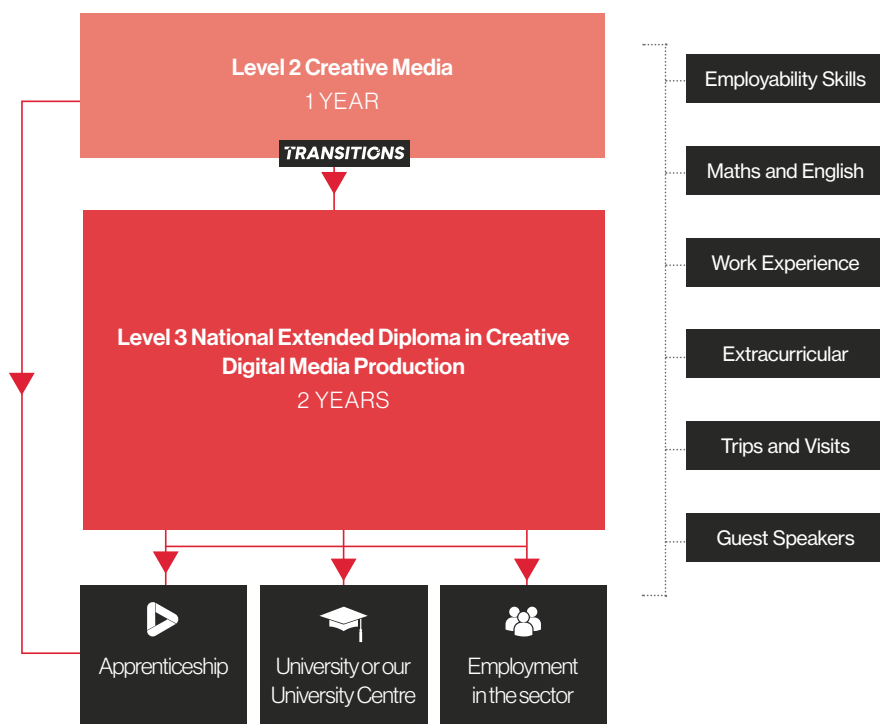
Growth in the Creative sector over recent years has been driven by a boom in computer services, highlighting the importance of digital creative industries such as video games.



Creative Media.

We are committed to ensuring you are on the right path to help you get ready for your future. No matter what level you start at, we will ensure you gain the skills and confidence to progress and succeed in your chosen sector.

Progression Pathways...



Top university destinations...



Level 2 Creative Media

1 YEAR COURSE

TRANSITIONS

Vocational Entry Requirements

4 GCSEs at grade 3 or above including either Mathematics or English, or a Level 1 equivalent in this area and GCSE Mathematics or English at grades 3 or above.

Description

This course is part of our new Transitions Programme – a unique and individualised programme for Level 2 students, which will support you in developing the key personal, technical and professional skills you need in order to get ahead, whether you want to progress to Level 3 or employment in your chosen sector.

The Creative Media Transitions programme is made up of subject specific practical skills including enterprise skills, empathy and compassion. You will also develop key employability skills including commitment, resilience, initiative, confidence, and professionalism.

Areas of study may include Communication with Service Users and Different Audiences, Social Media Platform Awareness as a Marketing Tool and Awareness of Different Client Groups.

After completing this course, you will have the necessary skills to progress onto the Level 3 Creative Digital Media Production course or an Apprenticeship.

There will be lots of opportunities for trips, visits, guest speakers, mentoring and work experience.

This is an exciting programme, designed to help you get ready for your next steps.

Level 3 National Extended Diploma in Creative Digital Media Production

2 YEAR COURSE

Vocational Entry Requirements

5 GCSEs at grade 4 or above including either Mathematics or English, or a Level 2 equivalent in this area and GCSE Mathematics or English at grade 4 or above.

Description

This course has been developed for students who wish to focus their study in Creative Digital Media Production, with a view to progressing to a related higher education course and a career within the creative industries.

The course is designed through client set projects, self-directed assignments, group work and work placements, as well as external exam assessments to develop your employability skills, such as self-management, and prepare you for higher education to specialise in the media sector.

You can expect a range of different opportunities across the course to study graphics, animation, publishing and film-making.

You will be mostly assessed on your coursework, portfolios and essay writing for 60% of the course and with 40% on an external assessment.

This exciting course can lead to a range of related higher education programmes such as:

- Media Studies
- Computer Animation
- Media Production
- Film
- Digital Television Production and Broadcast Audio Technology




For students with equivalent qualifications and experience, this will be discussed and considered at interview.

Digital.

As a Digital student, you can not only expect the highest quality of training from industry experts, but also a wide range of exciting opportunities to enhance your learning experience.

You will be helped in tailoring your study programme, through work experience placements, competitions, trips, guest speakers, and working with experienced tutors.

Top skills for this industry...

-  Good knowledge of computers and systems
-  An analytical mind
-  Strong organisation skills

Some of the employers we work with...



Finlay Clemson



School

St Christopher's CE High School

Achieved

Triple Distinction* in Digital

Where Next?

Studying Games Design at the University of Bolton



Enquire about our
Coding Clubs



VOCATIONAL | DIGITAL

Thinking of studying Digital or Creative Media?

You may also be interested in Digital and Creative Media available at our Nelson campus! Find out more at www.nelson.ac.uk

Did you know?

Representing around 850 member organisations ranging from Small Medium Enterprises to FTSE 100 companies, techUK has declared the UK a world leader in technology.

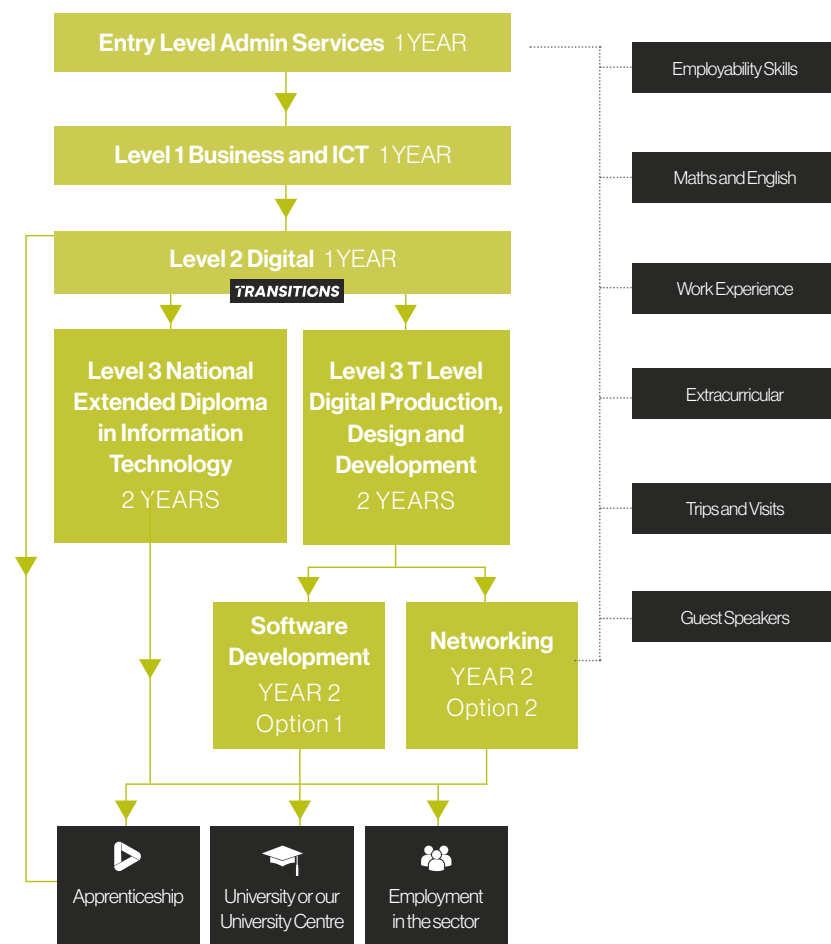
The UK Digital industry is expanding 2.6 times faster than the rest of the economy.



Digital.

We are committed to ensuring you are on the right path to help you get ready for your future. No matter what level you start at, we will ensure you gain the skills and confidence to progress and succeed in your chosen sector.

Progression Pathways...



Top university destinations...



Level 2 Digital

1 YEAR COURSE

TRANSITIONS

Vocational Entry Requirements

4 GCSEs at grade 3 or above including either Mathematics or English, or a Level 1 equivalent in this area and GCSE Mathematics or English at grade 3 or above.

Description

This course is part of our new Transitions Programme – a unique and individualised programme for Level 2 students, which will support you in developing the key personal, technical and professional skills you need in order to get ahead, whether you want to progress to Level 3 or employment in your chosen sector.

The Digital Transitions programme is made up of subject specific practical skills including programming, project development and software such as Photoshop and Python.

You will also develop key employability skills including decision making, initiative and understanding client requirements.

Areas of study may include Communication with Service Users and Different Audiences, Social Media Platform Awareness as a Marketing Tool and Awareness of Different Client Groups. After completing this course, you will have the necessary skills to progress onto a Level 3 Digital course including a T Level or an Apprenticeship.

There will be lots of opportunities for trips, visits, guest speakers, mentoring and work experience. This is an exciting programme, designed to help you get ready for your next steps.

Level 3 National Extended Diploma in Information Technology

2 YEAR COURSE

Vocational Entry Requirements

5 GCSEs at grade 4 or above including either Mathematics or English, or a Level 2 equivalent in this area and GCSE Mathematics or English at grade 4 or above.

Description

This course provides you with the knowledge, skills and expertise that you will require for your next steps into a digital career, whether this is employment or Higher Education.

You will cover a variety of skillsets around information technology, including Project Management, Database Design and Development, Cyber Security, Social Media, Web Development, IT Technician and Programming.

You will be given the opportunity to explore how organisations manage security, develop new software and administrate networks. You will learn a variety of skills including developing a broad knowledge of industry specific technical skills under the supervision of experienced tutors and with guidance from industry experts.

The units you will cover include; IT Systems, Databases, Social Media, Data Modelling, Web Development, Games Design, Cyber Security and Incident Management, IT Technical Support and Management, Software Testing and IT Service Delivery.

You will be assessed via internal and external assessment. The external assessments are set and marked by the exam board. The internal assessments are marked by your tutors via a series of coursework projects and portfolio evidence.

Alongside the course you have the opportunity to develop a broader skillset, which may include becoming a successful project manager, developing your programming skills, website development and cloud computing. There will be lots of opportunities for gaining industry knowledge of job roles within the digital sector, with trips to businesses including ROQ and EKM.

For students with equivalent qualifications and experience, this will be discussed and considered at interview.

T Level | Level 3

Digital Production, Design and Development.

2 YEAR COURSE

Vocational Entry Requirements

5 GCSEs at grade 4 or above including Mathematics and English, or a Level 2 equivalent in this area and GCSE Mathematics and English at grade 4 or above.

The T Level is a ground-breaking two-year Level 3 study programme that will offer students a mixture of classroom-based learning and on-the-job experience.

T Level students spend 80% of the course in the classroom, learning the skills that employers need. The other 20% is an industry placement, where students put these skills into action. A vocational alternative to A Levels and Apprenticeships, the T Level has been launched as part of the Government's review of Vocational education, under the Skills Plan. They have been collaboratively developed by the Department for Education (DfE), the Institute for Apprenticeships (IfA), education providers and employers.

The purpose of the Level 3 Technical qualification in Digital is to ensure that students have the knowledge and skills needed to progress into highly skilled employment, an Apprenticeship or higher level study.

What will I learn?

- Emerging Trends and Technologies
- Digital Analysis
- Business Environment
- Programming
- Software Development
- Digital Problem Solving

Furthermore, you will be working on employer set project briefs to apply and develop your core skills.

There is a strong emphasis on industry and professional skills within the programme, to help you build the skills necessary for when you move into employment. We have worked with a number of employers to ensure the standards being developed are of a professional quality.

Only available at our Nelson and Colne College campus



T-LEVELS
THE NEXT LEVEL QUALIFICATION

VOCATIONAL | DIGITAL

Layout of the two-year programme

In Year 1 you will study the core content for the Digital T Level and in Year 2 you will have the option to specialise in one of two pathways - Software Development or Networking. The Digital T Level is all externally assessed, and at the end of Year 1 there will be two written exams and one practical project to complete. At the end of Year 2 you will be required to complete a series of practical projects dependent on your chosen pathway.

An important requirement of the programme is that all students must complete a 315 hour (approximately 45 days) work placement with an external employer. We can help and support you in finding the right placement for you.

Software Development | Year 2 (Option 1)

You will build on your knowledge from Year 1 and have the chance to specialise in one of the following three areas; digital infrastructure, digital support or network cabling.

Networking | Year 2 (Option 2)

You will build on your knowledge from Year 1 and develop specialist skills in understanding user needs, designing interfaces, building/coding software and documenting it. This is a highly technical course that will develop your programming and software development skills.



Education and Childcare.

As an Education and Childcare student, you can not only expect the highest quality of training from industry experts, but also a wide range of exciting opportunities to enhance your learning experience.

You will be helped in tailoring your study programme, through work experience placements, trips, guest speakers, and more.

Top skills for this industry...



Patience and empathy



Good people skills



Excellent communication

Some of the employers we work with...



VOCATIONAL | EDUCATION AND CHILDCARE



Chloe Duxbury



School

The Hollins

Achieved

A in Education and Childcare

Where Next?

Secured employment as a Nursery Practitioner at The Beeches Child and Family Centre



Thinking of studying Education and Childcare?

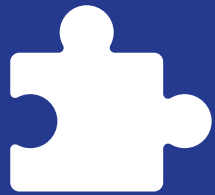
Also available at our Nelson campus!

Find out more at www.nelson.ac.uk

Did you know?

There are 71,535 childcare providers in the UK.

The majority of primary teachers employed by local authorities earn a starting salary of £24,373 to £35,971.



Education and Childcare.

We are committed to ensuring you are on the right path to help you get ready for your future. No matter what level you start at, we will ensure you gain the skills and confidence to progress and succeed in your chosen sector.

Progression Pathways...



Top university destinations...



Level 2 Education and Childcare

1 YEAR COURSE

TRANSITIONS

Vocational Entry Requirements

4 GCSEs at grade 3 or above including either Mathematics or English, or a Level 1 equivalent in this area and GCSE Mathematics or English at grade 3 or above.

Description

This course is part of our new Transitions Programme – a unique and individualised programme for Level 2 students. The course will support you in developing the key personal, technical and professional skills you need in order to get ahead, whether you want to progress to Level 3 or employment in your chosen sector.

The Education and Childcare Transitions programme is made up of subject specific practical skills including safeguarding protocols, stages of development and report writing. You will also develop key employability skills including commitment, resilience, initiative, confidence, and professionalism.

Areas of study may include Safe Working Practices and Communication with Children and Different Audiences. You will also work on your Maths and English skills.

After completing this course, you will have the necessary skills to progress onto a Level 3 course in Education and Childcare including a T Level or an Apprenticeship. There will be lots of opportunities for trips, visits, guest speakers, mentoring and work experience. This is an exciting programme, designed to help you get ready for your next steps.

Level 3 Diploma in Childcare

2 YEAR COURSE

Vocational Entry Requirements

5 GCSEs at grade 4 or above including either Mathematics or English, or a Level 2 equivalent in this area and GCSE Mathematics or English at grade 4 or above.

Description

On this course, you will learn about the development of children from birth to seven years old, looking at how children learn, how to plan activities and aspects of health and safety.

You will be assessed through a combination of written assessments, as well as undertaking two external controlled assessments and competency-based assessments in the workplace during your placement.

Units will include Children's Development from Birth to Seven Years, Children's Health and Wellbeing, Providing Safe Environments for Children, Play and Learning, Understanding Children's Additional Needs, Observation, Assessment and Planning and Creating a Professional Practice Portfolio.

This course has 750 hours in placement throughout two years. A DBS will also be needed for your placement.



For students with equivalent qualifications and experience, this will be discussed and considered at interview.

T Level | Level 3

Education and Childcare

2 YEAR COURSE

Vocational Entry Requirements

5 GCSEs at grade 4 or above including Mathematics and English, or a Level 2 equivalent in this area and GCSE Mathematics and English at grade 4 or above.

In Year 1 you will study the core content of the Education and Childcare T Level and gain a comprehensive overview of key concepts required to work in the sector.

The T Level is a ground-breaking two-year Level 3 study programme that will offer students a mixture of classroom-based learning and on-the-job experience. T Level students spend 80% of the course in the classroom, learning the skills that employers need.

The other 20% is an industry placement, where students put these skills into action. A vocational alternative to A Levels and Apprenticeships, the T Level has been launched as part of the Government's review of Vocational education, under the Skills Plan.

They have been collaboratively developed by the Department for Education (DfE), the Institute for Apprenticeships (IfA), education providers and employers.

The purpose of the Level 3 Technical qualification in Business and Administration is to ensure that students have the knowledge and skills needed to progress into highly skilled employment, an Apprenticeship or higher-level study.

As a part of the course you will also complete an employer-set project. The employer-set project ensures students have the opportunity to combine core knowledge and skills to develop a substantial piece of work in response to an employer set brief.

What will I learn?

- Working in the healthcare sector
- Person centred care
- Safeguarding
- Managing personal information
- Infection prevention
- Core science concepts
- Good scientific and clinical practice
- Assisting the adult nursing team with clinical tasks

The employer-set project forms part of the Technical Qualification and is a separate part of the T Level programme to the Industry Placement.

T-LEVELS
THE NEXT LEVEL QUALIFICATION

VOCATIONAL | EDUCATION AND CHILDCARE

Layout of the two-year programme

In Year 1 you will study the core content of the Education and Childcare T Level and gain a comprehensive overview of key concepts required to work in the sector.

This will be assessed through the completion of an Employer Set Project and two Core exams at the end of the first year. A series of practice assessments will be undertaken throughout the academic year to prepare for these external assessments. To further support application of knowledge for the Core assessments an industry placement will be completed across both years of the programme usually in a school or Early Years setting. English, maths and digital skills are fully embedded into the programme and assessed throughout the different components.

When you enter Year 2 you will focus on the occupational specialism of Early Years and undertake a series of assessments, largely based in your industry placement, to show occupational competence against a range of standards. These will be externally moderated and allow you to show application of knowledge gained in a practical setting.

The T Level industry placement will take place with a local employer and you will be required to complete 750 hours over the two year programme. Throughout your placement an assessor will support and monitor your performance in preparation for the work based competencies in the occupational specialism assessments. All classroom learning will be applicable to your placement and enrich your knowledge on key concepts. Support for travel and subsistence costs will be reviewed on an individual basis with the learner and employer.



Hairdressing and Beauty

As a Hairdressing and Beauty student, you will be taught by industry experts, who will be able to offer you lots of different opportunities to showcase your creative flair and improve your portfolio.

You will gain experience in our commercial salon - Distinction Hair and Beauty - and will be helped in tailoring your study programme, through work experience placements, guest speakers, and more.

Top skills for this industry...



Creativity and flair



Caring and positive attitude



Good communication

Some of the employers we work with...



ELEMIS



Silky



Ryan Mossop



School

Blessed Trinity RC College

Achieved

Level 2 in Hairdressing

Where Next?

Further study and employment at Art House Salon



Sign up to our
**six-week taster
course**

VOCATIONAL | HAIRDRESSING AND BEAUTY

Thinking of studying Hair and Beauty?

Also available at our Nelson campus!
Find out more at
www.nelson.ac.uk

Did you know?

Hair and beauty businesses have higher survival rates after five years than many other sectors.

Over 50% of people who work in the hairdressing and beauty sector are self-employed.



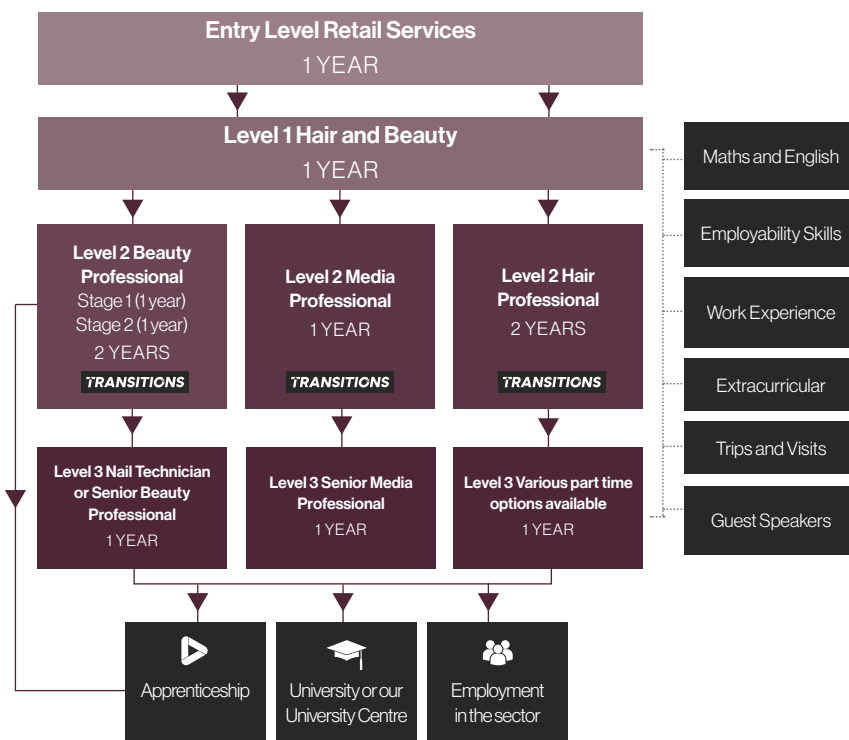
CAREER PATHWAYS

IMAGE CONSULTANT
 MASSAGE THERAPIST
 SKINCARE SPECIALIST
 BEAUTY ACCOUNT MANAGER
 HAIR STYLIST
 SPECIAL EFFECTS MAKEUP ARTIST
 NAIL TECHNICIAN
 BARBER
 PLUS MANY MORE...

Hairdressing and Beauty.

We are committed to ensuring you are on the right path to help you get ready for your future. No matter what level you start at, we will ensure you gain the skills and confidence to progress and succeed in your chosen sector. **Ask us about progression to our Level 3 courses at interview**

Progression Pathways...



Depending upon your skills, experience and qualifications, you will start at the level appropriate for you. This will be discussed at your interview



Other industry masterclasses and qualifications may be available alongside your programme



Progression onto an Apprenticeship could be available at any point in your programme, subject to suitable employment

Distinction
 HAIR & BEAUTY

VOCATIONAL | HAIRDRESSING AND BEAUTY



Level 2 Beauty Professional (Stages 1 and 2)

1 OR 2 YEARS DEPENDENT ON QUALIFICATIONS AND SKILLS

TRANSITIONS

Vocational Entry Requirements

4 GCSEs at grade 3 or above including Mathematics or English at grade 4. For the one year course students will need 4 GCSEs at grade 3 as well as Mathematics and English both at a grade 4 as a minimum.

Description

This course is part of our new Transitions Programme – a unique and individualised programme for Level 2 students. The course will support you in developing the key personal, technical and professional skills you need in order to get ahead, whether you want to progress to Level 3 or employment in your chosen sector.

The Beauty Professional Transitions programme is made up of subject specific practical skills including nail art, skin care, facials and manicures. You will also develop key employability skills including commitment, resilience, initiative, confidence, and professionalism.

Areas of study also may include gel polish, waxing and make up depending on the route you are taking (Stage 1 or 2). You will also work on your subject specific Maths and English skills. After completing this course, you will have the necessary skills to progress onto a Stage 2 Beauty (if on Stage 1), Level 3 Beauty, Nails or an Apprenticeship.

There will be lots of opportunities for trips, visits, guest speakers, mentoring and work experience. This is an exciting programme, designed to help you get ready for your next steps.



Students must complete the Level 2 qualification before progressing onto Level 3 as a requirement of the industry.

Level 2 Media Professional

1 YEAR COURSE

TRANSITIONS

Vocational Entry Requirements

4 GCSEs at grade 3 or above including either Mathematics or English.

Description

This course is part of our new Transitions Programme – a unique and individualised programme for Level 2 students. The course will support you in developing the key personal, technical and professional skills you need in order to get ahead, whether you want to progress to Level 3 or employment in your chosen sector.

The Media Professional Transitions programme is made up of subject specific practical skills including body art, make up techniques and styling. You will also develop key employability skills including commitment, resilience, initiative, confidence, and professionalism.

Areas of study may also include Awareness of Different Client Groups, Competition Work and Retailing Skills. You will also work on your Maths and English skills. After completing this course, you will have the necessary skills to progress onto a Level 3 Senior Media Professional or an Apprenticeship.

There will be lots of opportunities for trips, visits, guest speakers, mentoring and work experience. This is an exciting programme, designed to help you get ready for your next steps.



Level 2 Hair Professional (Stage 1)

2 YEAR COURSE

TRANSITIONS

Vocational Entry Requirements

4 GCSEs at grade 3 or above including either Mathematics or English.

Description

This course is part of our new Transitions Programme – a unique and individualised programme for Level 2 students, which will support you in developing the key personal, technical and professional skills you need in order to get ahead, whether you want to progress to Level 3 or employment in your chosen sector.

The Hair Professional Transitions programme is made up of subject specific practical skills including Masterclasses for Current Additional Skill Development and Product Design and Production. You will also develop key employability skills including commitment, resilience, initiative, confidence, and professionalism.

Areas of study may include colouring, styling and hair up techniques. You will also work on your Maths and English skills. After completing this course, you will have the necessary skills to progress onto a Hair Professional Stage 2 or an Apprenticeship.

There will be lots of opportunities for trips, visits, guest speakers, mentoring and work experience. This is an exciting programme, designed to help you get ready for your next steps.




For students with equivalent qualifications and experience, this will be discussed and considered at interview.

Health and Social Care

As a Health and Social Care student, you can not only expect the highest quality of training from industry experts, but also a wide range of exciting opportunities to enhance your learning experience.

You will be helped in tailoring your study programme, through work experience placements, trips, guest speakers, fundraising opportunities and more.

Top skills for this industry...

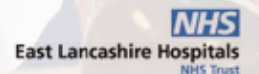
-  Strong team player who is organised and driven
-  Empathy and compassion
-  Effective communication

Some of the employers we work with...



VOCATIONAL | HEALTH AND SOCIAL CARE

Working in partnership with



Lily Carter



School

Bowland High

Achieved

A in Health and Social Care

Where Next?

Studying Social Work at the University of Central Lancashire



Thinking of studying Health and Social Care?

Also available at our Nelson campus!

Find out more at www.nelson.ac.uk

Did you know?

Careers in this industry are incredibly rewarding and you work closely with vulnerable people.

There are 1.5 million people working in the sector in 38,000 settings.

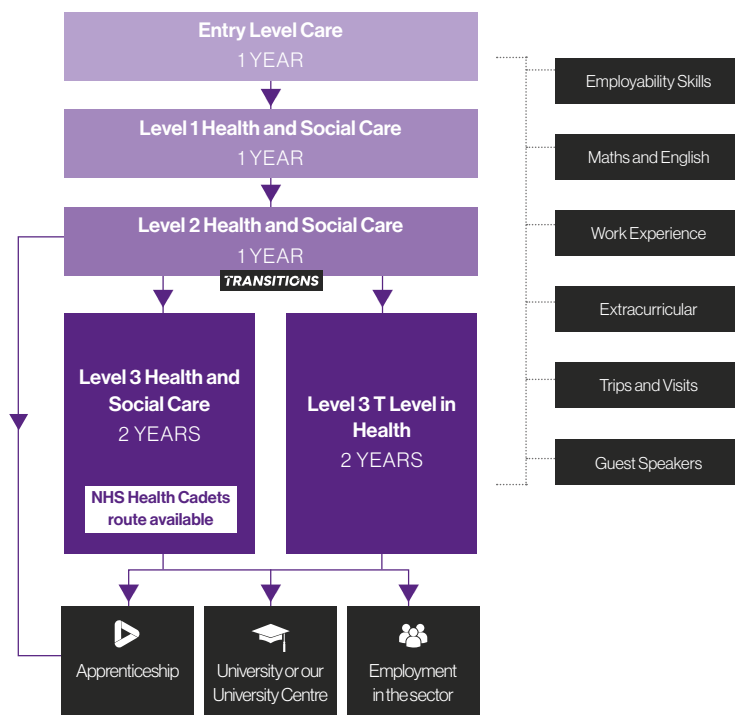


**CAREER
PATHWAYS**
**MIDWIFE
NURSE**
**OCCUPATIONAL
THERAPIST**
**SOCIAL
WORKER**
COUNSELLOR
CARE MANAGER
PLUS MANY MORE...

Health and Social Care.

We are committed to ensuring you are on the right path to help you get ready for your future. No matter what level you start at, we will ensure you gain the skills and confidence to progress and succeed in your chosen sector.

Progression Pathways...



Top university destinations...



Level 2 Health and Social Care

1 YEAR COURSE

TRANSITIONS

Vocational Entry Requirements

4 GCSEs at grade 3 or above including either Mathematics or English, or a Level 1 equivalent in this area and GCSE Mathematics or English at grade 3 or above.

Description

This course is part of our new Transitions Programme – a unique and individualised programme for Level 2 students, which will support you in developing the key personal, technical and professional skills you need in order to get ahead, whether you want to progress to Level 3 or employment in your chosen sector.

The Health and Social Care Transitions programme is made up of subject specific practical skills including care certificate standards, safeguarding protocols and report writing. You will also develop key employability skills including commitment, resilience, initiative, confidence, and professionalism.

Areas of study may include Safe Working Practices, Infection Control, Role of a Health and Social Care Practitioner and Dealing with Diversity. You will also work on your Maths and English skills as well as there being a scientific element to the course. After completing this course, you will have the necessary skills to progress onto a Level 3 Health and Social Care course including a T Level or an Apprenticeship.

There will be lots of opportunities for trips, visits, guest speakers, mentoring and work experience. This is an exciting programme, designed to help you get ready for your next steps.

VOCATIONAL | HEALTH AND SOCIAL CARE

Level 3 Health and Social Care

2 YEAR COURSE

Vocational Entry Requirements

5 GCSEs at grade 4 or above including either Mathematics or English, or a Level 2 equivalent in this area and GCSE Mathematics or English at grade 4 or above.

Description

Year 1

Technical Certificate in Health and Social Care

With an anticipated national shortage within this sector, there is no better time to join this industry. During the first year of study, you will cover units such as Health and Safety, Safeguarding, Infection Prevention Control, and Human Growth and Development. There is an option for students to embark on the NHS Health Cadets Scheme and A&E Cadets.

Year 2

Technical Extended Diploma in Health and Social Care

You will be given insight into a broad range of careers. You will learn about Empowerment, Anatomy and Physiology, Mental Health and Family Issues in Health and Social Care. The research project is an opportunity for students to focus on an area of health and social care that interests them, which can be linked to their career options.

There will also be an externally assessed controlled assessment in each year and an exam in Anatomy and Physiology in Year 2. You must also apply for a DBS, which will be covered by the College, dependent on funding requirements.

Health Cadets

As a Level 3 Health and Social Care student, you may have the opportunity to join the Health Cadets Programme with the East Lancashire Hospitals NHS Trust (ELHT). This competitive programme includes extensive work experience at all ELHT establishments, alongside practical career related training. Students receive an exciting programme of events, presentations, mentorships and work experience, all aimed at helping you to determine your health-related career path.

The Cadets is a challenging yet rewarding programme, providing excellent routes into professional training for clinical careers, such as radiography, speech and language therapy, nursing, mental health, dietetics or occupational therapy, as well as university. Students will undertake the Skills for Care Certificate (a recognised qualification for employment in the sector) during the programme.



T Level | Level 3

Health.

2 YEAR COURSE

Vocational Entry Requirements

5 GCSEs at grade 4 or above including Mathematics, English and Science, or a Level 2 equivalent in this area and GCSE Mathematics, English and Science at grade 4 or above.

The T Level is a ground-breaking two-year Level 3 study programme that offers students a mixture of classroom-based learning and 'on-the-job' experience.

A Vocational alternative to A Levels and Apprenticeships, the T Level has been launched as part of the Government's review of Vocational education, under the Skills Plan. They have been collaboratively developed by the Department for Education (DfE), the Institute for Apprenticeships (IfA), education providers and employers.

The T Level includes a core of knowledge and skills needed to work in the sector, a technical qualification, a substantial work placement of at least 750 hours over two years, as well as English, Mathematics and digital content.



T-LEVELS
THE NEXT LEVEL QUALIFICATION

VOCATIONAL | HEALTH AND SOCIAL CARE

The knowledge and skill you will learn include:

- Working in the Health Sector
- Safety and Environmental Regulations Related to Health
- Managing Information and data within the Health Sector
- Key Scientific and Clinical Practices
- Core Health Science Concepts

The content of the Health T Level is designed to get you ready for a career in the Health Sector, one that is identified as having a skills shortage both regionally and nationally.

There will also be sector specific content around supporting healthcare roles, including adult nursing, depending on the specialism chosen, which could include adult nursing, working with children and vulnerable adults and mental health.

The T Level will be assessed through a range of methods including external exams, coursework and external assessments - including an employer set project.

T Levels will train young people with the knowledge, skills and behaviours they need to enter skilled employment in a particular occupation, or to continue to study that technical subject at a higher level.






Law, Justice and Protective Services

As a Law, Justice and Protective Services student, you can not only expect the highest quality of training from industry experts, but also a wide range of exciting opportunities to enhance your learning experience. You will gain an in-depth understanding of Law and Criminology alongside an understanding of the various careers involved in the Protective Services.

You will gain transferable skills that can be applied to the workplace or further study.

Top skills for this industry...

-  Strong leadership and teamwork skills
-  Community minded
-  Problem solving

Thinking of studying Law, Justice and Protective Services?

Also available at our Nelson campus!
Find out more at

www.nelson.ac.uk

Did you know?

The starting salary for Police Constables in England, Wales and Northern Ireland is between £20,880 and £24,177, rising to £40,128 at the top of the scale - achievable after about seven years.

VOCATIONAL | LAW, JUSTICE AND PROTECTIVE SERVICES

Unique course taught by an **ex-police officer** and an **ex-criminal barrister**, only available with us!



**CAREER
PATHWAYS**

**POLICE
OFFICER**

**PROBATION
OFFICER**

**PRISON
OFFICER**

**BORDER
CONTROL**

**SOCIAL
WORKER**

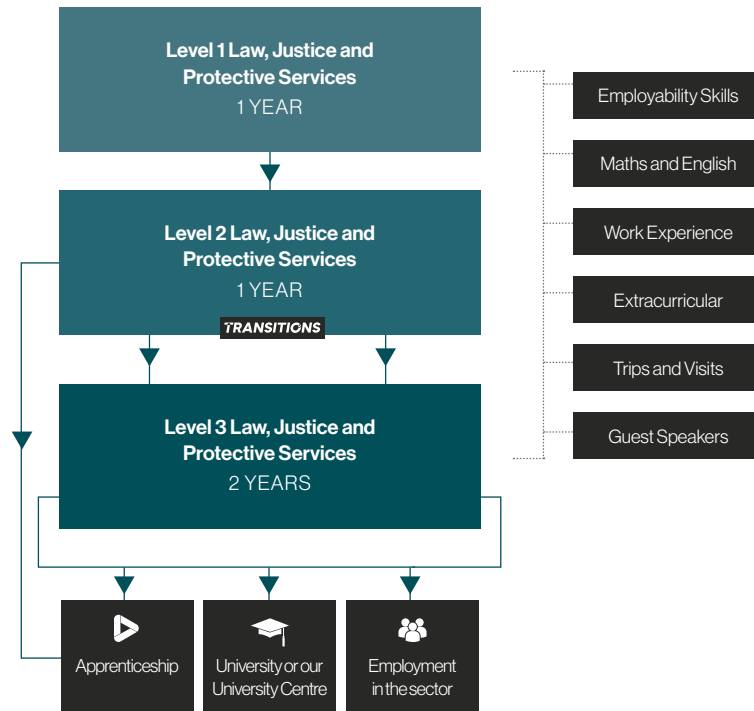
LAWYER

PLUS MANY MORE...

Law, Justice and Protective Services.

We are committed to ensuring you are on the right path to help you get ready for your future. No matter what level you start at, we will ensure you gain the skills and confidence to progress and succeed in your chosen sector.

Progression Pathways...



Police Cadets

The Police Cadets is a prestigious programme aligned to Lancashire Constabulary.

- Fantastic work experience shadowing PCSOs
- A taste of what it is like to have a career in the police force
- A potential stepping stone to voluntary roles within the police service

Top destinations...



Level 2 Law, Justice and Protective Services

1 YEAR COURSE

TRANSITIONS

Vocational Entry Requirements

4 GCSEs at grade 3 or above including either Mathematics or English, or a Level 1 equivalent in this area and GCSE Mathematics or English at grade 3 or above.

Description

This course is part of our new Transitions Programme – a unique and individualised programme for Level 2 students. The course will support you in developing the key personal, technical and professional skills you need in order to get ahead, whether you want to progress to Level 3 or employment in your chosen sector.

The Law, Justice and Protective Services Transitions programme is made up of subject specific practical skills including teamworking, problem solving and researching information. You will also develop key employability skills including commitment, resilience, initiative, confidence, and professionalism.

Areas of study may include types of crime, role of public services and managing risk. After completing this course, you will have the necessary skills to progress onto the Level 3 Law, Justice and Protective Services course.

There will be lots of opportunities for trips, visits, guest speakers, mentoring and work experience. This is an exciting programme, designed to help you get ready for your next steps.

Level 3 Law, Justice and Protective Services

2 YEAR COURSE

Vocational Entry Requirements

5 GCSEs at grade 4 or above including either Mathematics or English, or a Level 2 equivalent in this area and GCSE Mathematics or English at grade 4 or above.

Description

On this course you will prepare for a career in fields such as policing, the probation service and other protective services. You will develop vital skills, including leadership and learn about key aspects of the law, criminal justice system and the role of protective services.

You will also have the opportunity to test your problem-solving skills and planning through a variety of enrichment opportunities such as the Duke of Edinburgh's Gold Award.

Your course will equip you with the knowledge and skills for further study, Apprenticeships and roles in the workforce.



For students with equivalent qualifications and experience, this will be discussed and considered at interview.

Motor Vehicle.

As a Motor Vehicle student, you can not only expect the highest quality of training from our experts on industry standard equipment, but also a wide range of exciting opportunities to enhance your learning experience.

You will be supported in tailoring your study programme, through work experience placements, trips, guest speakers, and more. We stay up-to-date on industry developments, to ensure you are gaining the most relevant experience possible for future employment.

Our qualifications are always evolving, in line with the needs of industry. As such, our delivery covers a broad range of topics, to more recently include a focus on electric and hybrid vehicles. As a Motor Vehicle student, you will receive an additional Certificate for Electric Vehicle Technology as part of your course, which covers the safety aspects of working with high voltage vehicles, alongside other topics. This certificate will add value to your CV and provides evidence to employers that you have the latest skills and knowledge that they are looking for.

Top skills for this industry...



Good technical knowledge



Excellent attention to detail



Problem solving

Some of the employers we work with...



Bowker
Motor Group



LLOYD
GROUP
BMW

SKODA



VAUXHALL



Aiden Watson



School

Colne Park High School

Achieved

Completed a qualification in Motor Vehicle

Where Next?

Employment at DFJ Automotive



Thinking of studying Motor Vehicle?



You may also be interested in Engineering, available at our Nelson campus!

Find out more at
www.nelson.ac.uk

Did you know?

The UK produces 1.52 million cars each year, many of which are sent abroad. This totals 14.4% of the UK's exports.

30 million cars are serviced annually.

All of our staff are trained to Level 3 in Hybrid vehicles.



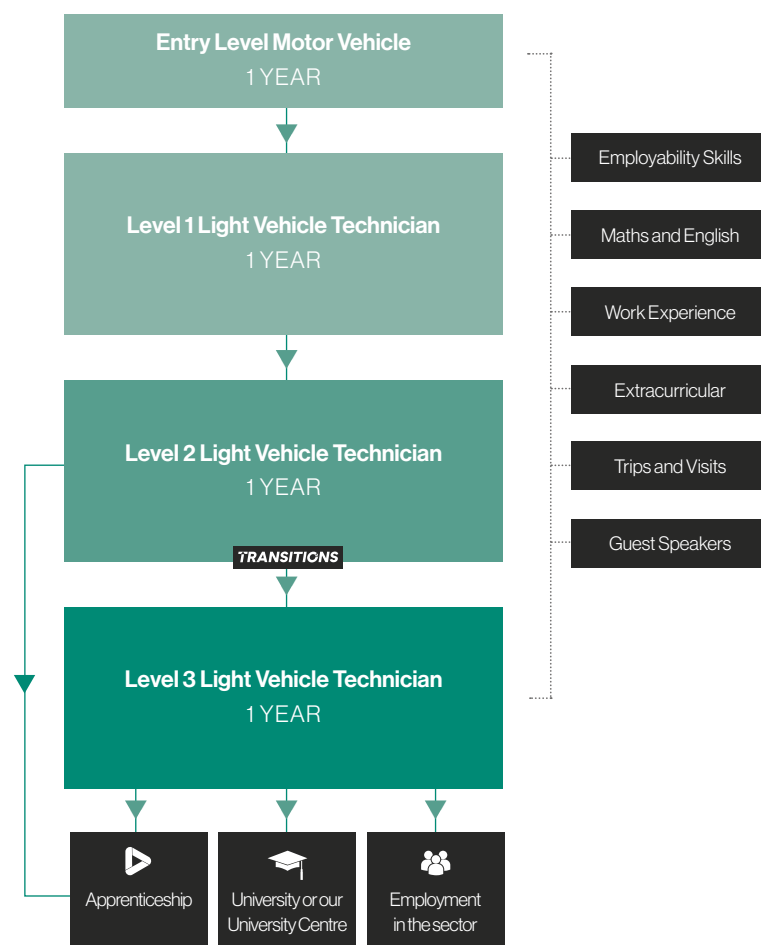
VOCATIONAL | MOTOR VEHICLE



Motor Vehicle.

We are committed to ensuring you are on the right path to help you get ready for your future. No matter what level you start at, we will ensure you gain the skills and confidence to progress and succeed in your chosen sector.

Progression Pathways...



Top university destinations...

We work closely with local Universities and have a number of our Level 3 students progress onto Higher Education Motor Sport qualifications.

Level 1 Light Vehicle Technician

1 YEAR COURSE

Vocational Entry Requirements

2 GCSEs at grade 2 or above including either Mathematics or English.

Description

This course will give students the opportunity to engage in learning and develop a range of skills and techniques, personal skills and attributes essential for successful performance in working life. It will also develop your knowledge and awareness of Motor Vehicle hands-on practical experience. The course will ensure you have a basic understanding of electric and hybrid vehicle awareness. As part of the course you will be required to complete work experience in a motor vehicle environment.

This course covers all elements of Motor Vehicle studies.

Units include:

- Health, Safety and Welfare in the Motor Vehicle Industry
- Knowledge of Technical Information
- Chassis Components
- Braking Systems
- Tyre Fitting
- Engine Construction Basics
- Suspension Systems
- Electrics

Level 2 Light Vehicle Technician

1 YEAR COURSE

TRANSITIONS

Vocational Entry Requirements

Students are required to have completed Level 1 Light Vehicle Technician course, or equivalent and GCSE Mathematics and English at grade 3 or above.

Description

This course is part of our new Transitions Programme – a unique and individualised programme for Level 2 students. The course will support you in developing the key personal, technical and professional skills you need in order to get ahead, whether you want to progress to Level 3 or employment in your chosen sector.

The Light Vehicle Technician Transitions programme is made up of subject specific practical skills including chassis components, braking systems, tyre fitting, suspension systems and First Aid training. You will also develop key employability skills including commitment, resilience, initiative, confidence, and professionalism.

Areas of study may include Safe Working Practices, Enterprise Skills and Awareness of Different Client Groups.

You will also work on your Maths and English skills. After completing this course, you will have the necessary skills to progress onto a Level 3 course in Motor Vehicle or an Apprenticeship.

There will be lots of opportunities for trips, visits, guest speakers, mentoring and work experience. This is an exciting programme, designed to help you get ready for your next steps.



For students with equivalent qualifications and experience, this will be discussed and considered at interview.

Level 3 Light Vehicle Technician

1 YEAR COURSE

Vocational Entry Requirements

Students are required to have completed Level 2 Light Vehicle Technician course, and GCSE Mathematics and English grade 3 as a minimum.

Description

This course will give you the opportunity to engage and develop your skills that you have gained from the previous Level 2 course. Typically, the course covers all aspects of in-depth analysis of motor vehicle systems and diagnostics.

You will need to complete mandatory assignments and online tests. As part of the course you will be required to complete work experience in a motor vehicle environment.

This course covers all elements of Motor Vehicle studies.

- Diagnosis and Rectification of Vehicle Engines (Advanced)
- Diagnosis and Rectification of Engine Management systems (Advanced)
- Diagnosis and Rectification of Electrical Auxiliary Systems (Advanced)
- Customer Care
- Diagnosis and Rectification of Vehicle Transmission Systems (Advanced)
- Diagnosis and Rectification of Vehicle Chassis Systems (Advanced)



Sport.

As a Sport student, you can not only expect the highest quality of training from industry experts, but also a wide range of exciting opportunities to enhance your learning experience.

You will be helped in tailoring your study programme, through work experience placements, trips, guest speakers and more.

Top skills for this industry...

 Strong leadership skills

 Communication skills

 Good physical fitness

Some of the employers we work with...



Lydia Main



School

Haslingden High School

Achieved

Triple Distinction* in Sport

Where Next?

Sport Coaching and Performance at Nelson and Colne College Group University Centre



Enquire
about our
**Netball
Academy**

VOCATIONAL | SPORT

Thinking of studying Sport?

Also available at our
Nelson campus!

Find out more at
www.nelson.ac.uk

Did you know?

Experienced Sports and Exercise Psychologists can earn between £27,000 and £37,000.

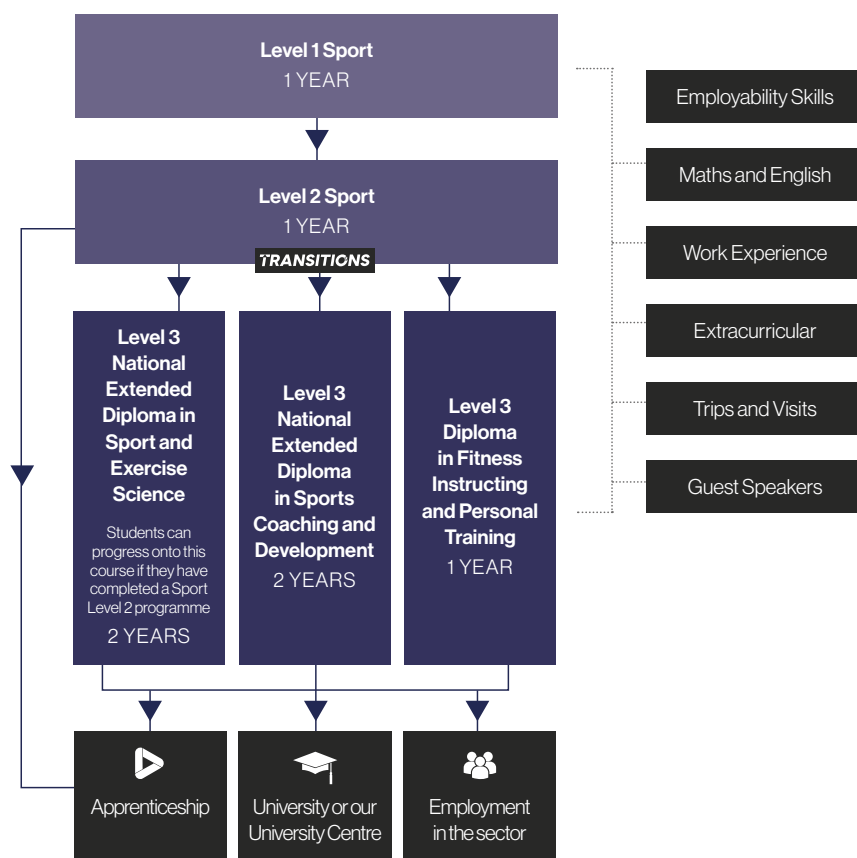
Sport and Exercise Science research is preventing and treating conditions and diseases that cost the NHS billions every year.



Sport.

We are committed to ensuring you are on the right path to help you get ready for your future. No matter what level you start at, we will ensure you gain the skills and confidence to progress and succeed in your chosen sector.

Progression Pathways...



Top university destinations...



Level 2 Sport

1 YEAR COURSE

TRANSITIONS

Vocational Entry Requirements

4 GCSEs at grade 3 or above including either Mathematics or English, or a Level 1 equivalent in this area and GCSE Mathematics or English at grade 3 or above.

Description

This course is part of our new Transitions Programme – a unique and individualised programme for Level 2 students, which will support you in developing the key personal, technical and professional skills you need in order to get ahead, whether you want to progress to Level 3 or employment in your chosen sector.

The Sport Transitions programme is made up of subject specific practical skills including First Aid training, coaching and fitness training and fitness testing. You will also develop key employability skills including commitment, resilience, initiative, confidence, and professionalism.

Areas of study may include Leadership, Safe Working Practices and Communication with Children and Different Audiences. After completing this course, you will have the necessary skills to progress onto the Level 3 National Extended Diploma in Sports Coaching and Development, a Level 3 in Sport and Exercise Science or an Apprenticeship.

There will be lots of opportunities for trips, visits, guest speakers, mentoring and work experience.

This is an exciting programme, designed to help you get ready for your next steps.

Level 3 National Extended Diploma in Sport and Exercise Science

2 YEAR COURSE

Vocational Entry Requirements

5 GCSEs at grade 4 or above including Mathematics and English and preferably Science, or a Level 2 equivalent in this area and GCSE Mathematics or English and preferably Science at grade 4 or above.

Description

This course is a specialist, industry relevant programme developed with employers and universities in the sector. The programme supports progression into employment, often via university, in a range of disciplines including Sport Science, Nutrition, Psychology and Sports Therapy. This course also supports progression for those interested in teaching. The range of modules you will study include Sport and Exercise Physiology, Psychology, Nutrition, Fitness Training and Fitness Testing.

These modules will help you develop the leadership and communication skills vital for future career success. They will also develop your practical and technical knowledge through a range of practical, class based and lab based learning opportunities.

Most students progress to university following successful completion of this course, including our own degree in Sports Coaching and Performance.

You may also consider an Apprenticeship or employment in the sports sector.

For students with equivalent qualifications and experience, this will be discussed and considered at interview.

Level 3 National Extended Diploma in Sports Coaching and Development

2 YEAR COURSE

Vocational Entry Requirements

5 GCSEs at grade 4 or above including either Mathematics or English, or a Level 1 equivalent in this area and GCSE Mathematics or English at grade 3 or above.

Description

This course has been developed alongside the Chartered Institute for the Management of Sport and Physical Activity (CIMSPA) and is designed to support progression to multiple routes including employment, Higher Education and Apprenticeships.

The range of modules you will study include Developing and Applied Coaching Skills, Sports Psychology, Nutrition, Sports Injuries and Massage, Fitness Training and Testing and Practical Sports Application. The curriculum will develop key industry skills including leadership, communication and a range of practical and technical skills in order to help you develop a career in the sports industry.

From this programme you can progress to Higher Education, including our own degree course in Sports Coaching and Performance or into employment, as you will be Level 1 Coach qualified on successful completion. You may also wish to consider an Apprenticeship.

Level 3 Diploma in Fitness Instructing and Personal Training

1 YEAR COURSE

Vocational Entry Requirements

5 GCSE's grade 4 or above either Maths or English and preferably Science.

Description

This qualification provides students with the knowledge, understanding and practical skills needed to work as a Gym Instructor and Personal Trainer in a variety of settings. The qualification is mapped to the CIMSPA (Chartered Institute for the Management of Sport and Physical Activity) Gym Instructor and Personal Trainer professional standards. During the course you will benefit from teaching led by industry specialists in a range of practical and theoretical topics that will give you the knowledge, skills and behaviours to pursue a successful career in the fitness industry.

During this course, you will cover key topics that will include the principles of working in the gym environment, customer service, how to maintain health, safety and welfare, anatomy and physiology, how to conduct consultations and promote the health benefits of a physical activity. You will also study how to communicate effectively and motivate clients to adhere to an exercise programme, how to plan and prepare a gym-based exercise programme, learn about marketing and business planning, personal training programming and how to deliver personal training sessions.

You will also benefit from work experience in the fitness industry as part of your study programme. Most students will progress to employment and the qualification opens the door to several group exercise specific qualifications including Level 2 Awards for Instructing Core Group Exercise (Group Cycling, Kettlebell Training, Circuit Training, Suspension Training).





Apprenticeships Contents.

Apprenticeships	110
Your Journey	114
Business and Professional Services	116
Catering and Hospitality	116
Construction Trades and Building Services	117
Education and Childcare	117
Engineering and Manufacturing	118
Hairdressing and Beauty	118
Health and Social Care	119
Motor Vehicle Maintenance and Repair	119
Retail, Sales and Customer Service	120

Why an Apprenticeship?

Choosing the right type of qualification for your future career can be a difficult decision.

Here is some useful information about Apprenticeships to help you make up your mind...

- An Apprenticeship is a full-time job. You work for a business while gaining a nationally recognised qualification
- It is on-the-job training, and you even get paid!
- You will develop the skills and experience that employers want, and you will build up an impressive CV
- Apprenticeships take between one to four years to complete, depending on the type and level
- You can learn at a pace suited to you and you will have support from a Trainer Assessor
- Many employers choose to continue investing in their future workforce and grow their talent pool by employing Apprentices upon completion of their studies
- After completing an Apprenticeship, you could continue to train for an advanced, higher, or degree level Apprenticeship, or a related Vocational qualification. Alternatively, you could go on to university, or take a professional qualification that leads to a specific job role



Get ready for an...

Apprenticeship

Our College has been providing a range of Apprenticeships for many years.

We have an excellent reputation with businesses across East Lancashire and beyond, who look to us to find their next star employee. If you decide that an Apprenticeship is the right route, you could be that employee!

We currently have over 1,800 Apprentices working in businesses both large and small who go on to become real assets to their employers and regularly secure full-time employment after their Apprenticeship.



Specialist Apprenticeship
Recruitment Team to help
you find employment



Talent matching service
to recruit you into the
right role



Individualised
Pre-Apprenticeship
support

Pre-Apprenticeship Support

We understand that it is vital for young people to be equipped with the skills needed to secure employment and perform well in their roles. With this in mind we will work with you to develop your skills to make you more attractive to potential employers.

The type of support offered may include:

- Developing your CV and interview techniques
- Applying for an Apprenticeship
- Improving communication and presentation skills
- Industry specific qualifications and skills such as Paediatric First Aid or Health and Safety at Work
- Individualised advice, guidance and support
- An opportunity to complete certain key skills essential for employment
- Finding relevant work placements

FAQs

What is an Apprenticeship?

An Apprenticeship gives you hands-on experience, a salary and the opportunity to train while you work. Apprenticeships are equivalent to a full-time academic qualification and there are a wide range of areas you can complete an Apprenticeship in. See our subject pages for details.

What are the benefits of an Apprenticeship?

- Earning a salary
- Training in the skills employers want
- 20% of your time is set aside for learning
- Excellent progression opportunities
- Increased future earning potential
- Better long term salary prospects
- Learning at a pace suited to you with the support of a mentor
- Gain official certification of skills equivalent to qualifications ranging from level 2 up to degree level
- Paid holidays

What grades do I need to do an Apprenticeship?

Intermediate Apprenticeship 4 GCSEs at grade 3 or above (one of these must be in English or Mathematics) or equivalent.

Advanced Apprenticeship 5 GCSEs at grade 4 or above (one of these must be in English or Mathematics) or successful completion of an Intermediate Apprenticeship, or equivalent.

These requirements are subject to change and may also differ to meet the needs of the employer. As well as a College interview, progression onto an Apprenticeship is subject to an employer interview. Don't worry if you don't get the required grades, we can work with you to find a suitable route on to your Apprenticeship.

How much do I get paid?

All Apprentices receive at least the National Apprenticeship Minimum Wage in the first year, however some employers do choose to pay more.

How many hours a week do I work?

This is dependent on the employer and the role the Apprentice is undertaking.

Am I guaranteed a job?

No, however Government data shows that nationally 90% of Apprentices stay in employment after finishing their Apprenticeship, with many staying with the same employer, offering you a real future.

How long will it last?

Apprenticeships typically last for one to four years depending on the area of study. The majority of Apprenticeships last for two years.

What do employers expect from an Apprentice?

All Apprentices are expected to conduct themselves professionally in the workplace and must be conscientious in their work, attendance and timekeeping. Our unique Talent Pool package will help guide you in developing the skills and qualities desired by employers, however a desire to work and further your skills is essential!

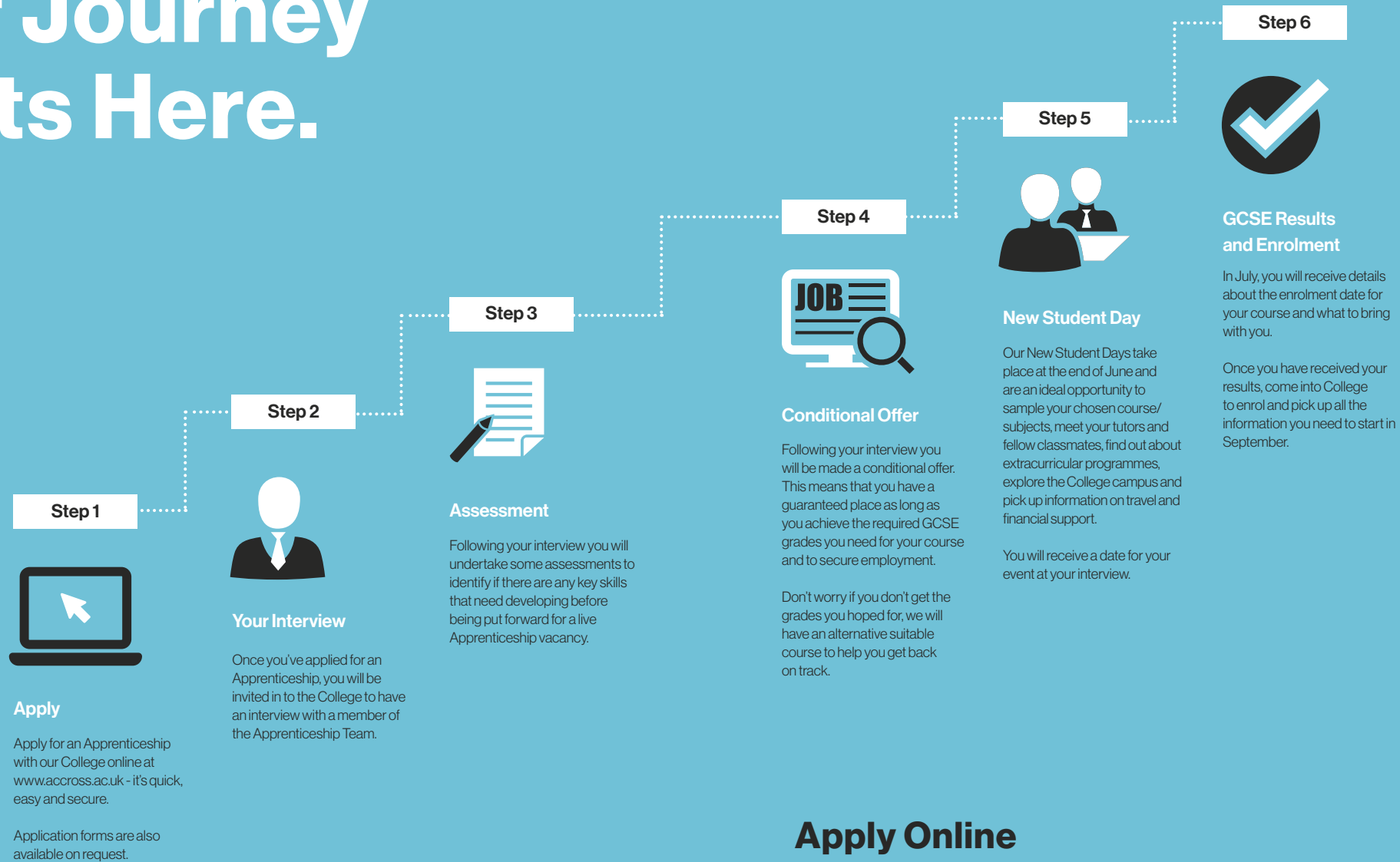
What does an Apprenticeship involve?

Training combines off the job study (usually at College) with learning and development in the workplace.

Can an Apprenticeship lead to university?

Yes! A growing number of Apprentices also go onto Higher Apprenticeships to gain degree level qualifications, but without the expense of going to university.

Your Journey Starts Here.



Apply Online

www.across.ac.uk/apprenticeships



Get ready for an Apprenticeship in...

Business and Professional Services

Available from Levels 2 to 5*

Apprenticeships available in...

- Accountancy
- Business Administration
- HR Support
- IT
- Team Leader
- Social Media and Digital Marketer

Top skills for this industry...

Excellent communication and negotiating techniques

Strong organisation skills

Decision making skills

Some of the employers we work with...



*Levels vary depending on framework/standard



Get ready for an Apprenticeship in...

Catering and Hospitality

Available from Levels 2 to 3*

Apprenticeships available in...

- Senior Chef - Production Cooking
- Commis Chef
- Hospitality Supervisor

Top skills for this industry...

Ability to work well under pressure

Great people skills

Enthusiasm and commitment

Some of the employers we work with...



*Levels vary depending on framework/standard

Get ready for an Apprenticeship in...

Construction Trades and Building Services

Available from Levels 2 to 4*

Apprenticeships available in...

- Brickwork
- Carpentry and Joinery
- Civil Engineering
- Painting and Decorating
- Plastering

Top skills for this industry...

Excellent technical knowledge

Good team working skills

Creative approach for new ideas

Some of the employers we work with...



*Levels vary depending on framework/standard



Get ready for an Apprenticeship in...

Education and Childcare

Available from Levels 2 to 5*

Apprenticeships available in...

- Childcare
- Early Years Practitioner
- Early Years Educator
- Supporting Teaching and Learning in Schools
- Supporting Teaching and Learning in Physical Education and Schools

Top skills for this industry...

Excellent customer service skills

Patience and empathy

Positive attitude

Some of the employers we work with...



*Levels vary depending on framework/standard





Get ready for an Apprenticeship in...

Engineering and Manufacturing

Available from Levels 2 to 5*

Apprenticeships available in...

- Electrical Engineering
- Maintenance Engineering
- Manufacturing Engineering
- Mechanical Engineering

Top skills for this industry...

Excellent technical knowledge

Good problem solving skills

Analytical mind

Some of the employers we work with...



*Levels vary depending on framework/standard



Get ready for an Apprenticeship in...

Hairdressing and Beauty

Available from Levels 2 to 3*

Apprenticeships available in...

- Hairdressing
- Barbering
- Beauty Therapy

Top skills for this industry...

Creativity and artistic sense

Good listening skills

A caring and positive attitude

Some of the employers we work with...



*Levels vary depending on framework/standard

Get ready for an Apprenticeship in...

Health and Social Care

Available from Levels 2 to 3*

Apprenticeships available in...

Health and Social Care

Top skills for this industry...

Effective communication skills

Empathy and compassion

Strong team player

Some of the employers we work with...



*Levels vary depending on framework/standard



Get ready for an Apprenticeship in...

Motor Vehicle Maintenance and Repair

Available from Levels 2 to 3*

Apprenticeships available in...

Autocare Technician

Top skills for this industry...

Excellent communication skills

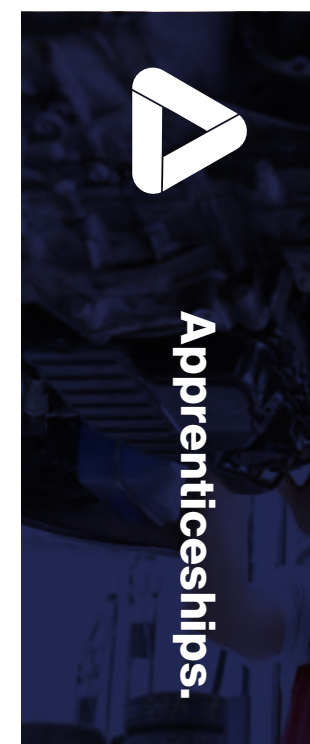
Good problem solving skills

Ability to manage projects

Some of the employers we work with...



*Levels vary depending on framework/standard





Get ready for an Apprenticeship in...

Retail, Sales and Customer Service

Available from Levels 2 to 3*

Apprenticeships available in...

Retail

Customer Service Practitioner

Top skills for this industry...



Ability to lead and motivate a team



Excellent communication skills



A positive attitude

Some of the employers we work with...

calico

Borough of
Pendle

ODDIE'S
QUALITY FAMILY BAKERY SINCE 1981

NELSON & COLNE
COLLEGE

*Levels vary depending on framework / standard



For more information, please see our Apprenticeships Guide online

www.accross.ac.uk/apprenticeships



Student Services.

Extracurricular	124
Student Support	126
Financial Support	128
Careers Zone	130
Travelling to College	132
Applying to College	134

Extracurricular.

We have an exciting, extensive and constantly-evolving programme of extracurricular activities for your personal development, to keep you fit and to get you career-ready. Develop a new skill, learn a new language, volunteer for a good cause or keep fit through sport. There is something for everyone to enjoy!

Clubs and Societies

Discover and develop your creative flair and improve your confidence and wellbeing by getting involved with a club or society.

- Arts and Crafts
- Board Games and Chess Club
- Book Club
- Creative Arts
- Debating Society
- Gaming
- Life Drawing

Sport and Leisure

Keep fit, make friends and get active with one of our College sports, open to all.

- Archery
- Badminton
- Basketball
- Bubble Football
- Clubbercise/Glow Fit
- College Gym
- Cricket
- Cycling and Bikeability
- Dance
- Fitness Sessions
- Football
- Running Groups
- Self-defence
- Skiing
- Table Tennis
- Volleyball
- Yoga

Sport Academies

Challenge yourself and compete against peers from across the region in the British College Sport Leagues.

- Football Academy
- Netball Academy
- British College Sports League

Burnley FC Girls' Academy

Football and Education Programme

Are you a future female Clarets star?

Kick-start your career in the Girls' Academy and combine playing skills with academic practice! Open to all female students on a College course, subject to a successful trial.

EXTRA curricular

National and Global Awareness Events

Support a number of awareness events throughout the academic year and feel the benefits from taking on board advice and guidance.

- Alcohol Awareness Week
- Anti-Bullying Week
- Global Recycling Day
- Men's Health Awareness Month
- National Stress Awareness Day
- Remembrance Day
- Road Safety Week
- Safer Internet Day
- World Mental Health Day

Volunteering

Make a difference, learn new skills and take on a new challenge by volunteering.

- Care Home Volunteer Supporters
- Charity Fundraising
- National Citizen Service (NCS)
- Peer Mentoring
- Pick up for Pendle
- Student Ambassador
- Student Readers
- Sustainability Group - Social Action Project
- Wellbeing Peer Supporters
- Young Leaders' Programme



Duke of Edinburgh's Award

Go for Gold in the ultimate challenge and join our Duke of Edinburgh's Awards programme (Bronze Award also available).

Career and Life Skills

Put yourself at the front of the queue at interview by gaining a new career skill, or take up a life skill to be learned away from the classroom.

- British Sign Language and Deaf Awareness
- Driving Theory and idrive
- Hair and Beauty Masterclasses and Henna Painting
- Call Push Rescue
- Relaxation and Stress Management
- Resilience, Confidence and Mindfulness

Supporting You.

There are a wide range of specialist drop-in services and facilities that you can access during your time at College. Find out more in this section.

Additional Learning Support

We have a dedicated team of professionals who support students with any disability or learning support needs. Our team is committed to ensuring that every student has the support and resources to achieve their full potential. Whether you have a special educational need or a disability, the ALS Team will be there for you every step of the way, providing tailored support to help you get the most out of learning.

Health and Wellbeing

Our Health and Wellbeing Team are dedicated professionals who are here to help you with all manner of advice, guidance and support. We have a wide range of specialist and dedicated drop-in services and facilities that you can access during your time at College.

We also have a College Nurse who offers drop-in services where students can receive confidential advice on a number of different health and wellbeing issues including:

- General health concerns
- Sexual health
- Smoking cessation
- Eating disorders
- Bereavement
- Anxiety, depression and stress
- Emotional health
- Plus much more!

Safeguarding and Welfare

Our Safeguarding Team are dedicated, qualified professionals who are here to help you with all manner of advice and guidance, safeguarding and welfare.

As a student with us you can drop-in to our Safeguarding and Welfare Zone or arrange an appointment with one of the team.

We are committed to creating a safe environment for all students. Our Safeguarding and Welfare Team will support you to overcome personal issues and build resilience skills to be successful both at the College and in the future.

Safety and Engagement Officers

Our Safety and Engagement Officers are on hand on site to ensure a positive environment for all students. You will find them in public areas throughout the day where they will help to ensure you feel happy and safe in College.

They will offer information and advice to give you the confidence to make informed choices and fully participate in College activities.



Financial Support Packages.

We have an extensive financial support package for our full-time 16-18 year-old students.

Support packages are tailored to individual needs, to help you throughout your time at College.

College Bursary Fund

Assistance from our College Bursary Fund is available to students with an annual household income under £31,496 (gross)* per year.

The following support is available:

- **FREE** bus travel*
- **FREE** equipment and material awards for students on courses including Hair, Beauty, Art, Protective Services, Engineering, Education and Childcare, and Health and Social Work Professions
- **FREE** College meals**

Vulnerable Bursary Fund

There is also a Vulnerable Bursary Fund of up to £1,200 a year for students who are one of the following*:

- In receipt of Income Support or Universal Credit
- In receipt of Employment Support Allowance and Disability Living Allowance
- In receipt of Personal Independence Payments (PIP) in own right and in receipt of Employment Support Allowance or Universal Credit
- In the care of the Local Authority
- A Care Leaver

The financial support package is reviewed each year and may be subject to change.

Contact Student Services

Call **01254 389 933** or email **StudentServices@nelsongroup.ac.uk**

UPAY, The smarter way to pay

The College uses a cashless "smart card" system, which enables students to pay for food and drinks in College catering outlets without the need to carry cash.

Students can simply add funds via their UPAY account. For more information visit www.accross.ac.uk/servicesandfacilities/smartcard
Students eligible for Free College Meals will have their smart card automatically topped up.

Subsidised Bus Travel

All 16-18 year-old students are entitled to subsidised termly bus passes. Also, bus travel is **FREE*** if your household income is under £31,496 per year.

Pay My Student

Applications for financial support from the College Bursary Fund (including free and subsidised travel) are submitted via our online portal.

For more information contact our Student Services Team.

FREE Breakfast

All students arriving before 9am each day can enjoy a **FREE** healthy breakfast in the Refectory.

*Evidence will be required.

**Dependent on individual circumstances.

Careers Zone.

Thinking about what you want to do during and after your time at College can be difficult.

Our Careers Zone offers a specialist advice service for our students and Apprentices, designed to help prepare you for your future career. Whether you are unsure of your options, want to know more about different careers or want guidance preparing for your next step, our Careers Zone Team can provide you with the tailored support you need.

Talk to our team about:

- Personalised careers advice and information
- Volunteering opportunities
- University applications (UCAS)
- University finance advice
- Part-time job vacancies
- Job roles and opportunities
- CV development
- Apprenticeship advice and application support
- Interview techniques
- Gap year ideas

Our expert team can also provide information on the local jobs market (Labour Market Information - LMI) to help you research your chosen career path and make informed choices.

Our online resources provide information on different job roles, what qualifications and skills they require, and what prospects and salaries you can expect. LMI also advises you of which types of jobs will be in demand after you leave education, helping you choose the right career for you.

Work Placements

Work placements can help you to develop invaluable skills and experience of the industry you want to work in. It will help you build contacts and develop your CV, demonstrating to employers and universities that you have the skills they are looking for, and ultimately putting you ahead of the competition.

We have a dedicated team of professionals who work with local employers and can help you to find the right placement for your future career aim.

They can support with...

- Finding a work placement
- Developing your CV
- Interview preparation
- Understanding behaviours in the workplace
- Getting the most out of your placement



FREE SHUTTLE SERVICE
TO ALL STUDENTS

Shuttle Service to College
200 Service

- Accrington Bus Station
- Accrington and Rossendale College

Morning Service
Monday, Tuesday, Thursday and Friday
Operating every 15 minutes
8am, 8.15am, 8.30am, 8.45am and 9am
Wednesday
Operating every 15 minutes
8.30am, 8.45am, 9am, 9.15am
and 9.30am

Evening Service
Everyday
Operating every 15 minutes
4pm, 4.15pm, 4.30pm, 4.45pm and 5pm

From Earby
100 Service

- Earby, Co-op
- Kelbrook, Craven Heifer
- Foulridge, Hare and Hounds
- Colne, Skipton Road - Park
- Colne, Police Station
- Colne, Golden Ball
- Nelson, Safespace
- Nelson, The Village Pizzeria/Bus Station
- Brierfield, Spar/Petrol Station
- Brierfield, Tile Centre
- Accrington and Rossendale College

**Bus times to
Accrington Bus Station**

Blackburn	28 mins
Clayton-le-Moors	7 mins
Rishton	35 mins
Burnley	12 mins
Padiham	37 mins
Wilpshire	56 mins
Baxenden	8 mins
Rising Bridge	12 mins
Oswaldtwistle	13 mins
Bacup	50 mins
Waterfoot	39 mins
Rawtenstall	48 mins
Church	16 mins
Huncoat	18 mins
Altham	40 mins
Whalley	38 mins
Haslingden	25 mins
Ramsbottom	35 mins
Sabden	51 mins
Hapton	24 mins

**Request a copy of our Bus Guide
from Student Services**

01254 389 933
StudentServices@nelsongroup.ac.uk

All routes/services are correct at time of print
and are subject to change.

TRAVELLING TO COLLEGE | BUS SERVICES

FREE*
BUS PASS

*if your household income is
under **£31,496**

We also offer FREE* Transdev termly Lancashire and Blackburn bus passes which cover a wide geographical area including Burnley, Blackburn, Clitheroe and Colne.

admissions@nelsongroup.ac.uk 01282 440 272 www.across.ac.uk



Apply Online.

at www.across.ac.uk

Unable to apply online?

Please contact the **Admissions Team** by calling
01282 440 272 or emailing admissions@nelsongroup.ac.uk

Part of the



Register for our Open Events online at www.accross.ac.uk

Open Events

5.30pm - 7.30pm

Tuesday 21 September

Wednesday 10 November

Wednesday 9 February

Accrington and Rossendale College
Sandy Lane, Accrington, Lancashire, BB5 2AR

✉ admissions@nelsongroup.ac.uk

☎ 01282 440 272

🌐 www.accross.ac.uk

f t i